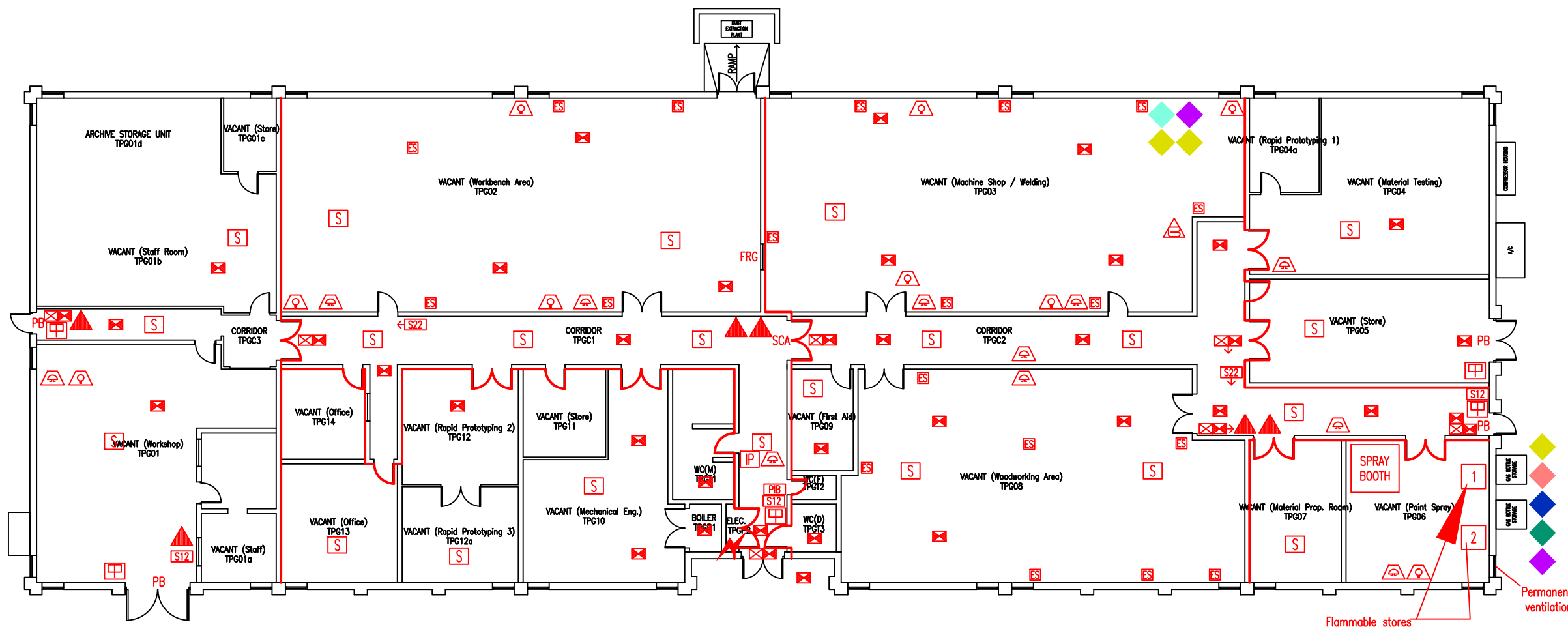


DATE	REVISION
A 3.2.09	PLAN UPDATED FOLLOWING FSDS'S SURVEY
B 3.2.09	PLAN UPDATED FOLLOWING FSDS'S SURVEY
C 4.9.09	TPG02a & b COMBINED & RENUMBERED AS TPG02
D 20.9.10	UPDATE FOLLOWING INSTALLATION OF DUST EXTRACTION PLANT
E 26.11.10	TPG14 UPDATED TO OFFICE
F 21.2.12	FIRE RESISTING WALLS UPDATED FOLLOWING FSDS'S SURVEY
G 16.3.12	PREMISES INFORMATION BOX ADDED
H 23.1.13	GAS BOTTLE STORES ADDED
J 3.11.15	TPG01b-c UPDATED TO EG FOLLOWING MOVE FROM 21LR
K 26.9.16	TPG01a UPDATED TO STAFF FROM STAFF ROOM
L 9.6.17	EXTINGUISHER POSITIONS & TYPES UPDATED
M 26.7.17	ELECTRICAL SHUT-OFF POINT ADDED
	ROOMS UPDATED TO "VACANT" FOLLOWING RELOCATION OF ESTATES & SciTech TO POOLE HOUSE.



Flammable stores
Permanent ventilation

- Key to Fire Symbols**
- Existing fire alarm control panel
 - Existing fire resisting construction 30 min.
 - Existing premises information board
 - Existing emergency electrical cut-off switch
 - Existing oxygen gas cylinders
 - Existing nitrogen gas cylinders
 - Existing propane gas cylinders
 - Existing butane gas cylinders
 - Existing acetylene gas cylinders
 - Existing argon gas cylinders

- Fire resisting glazed element
- Existing call point - manual
- Existing 6 litre P50 foam fire extinguisher
- Existing fire blanket
- Existing emergency lighting luminaire
- Existing audible warning device
- Existing visual warning device
- Existing smoke detector
- Existing pushbar door ironmongery
- Existing fire action sign - general
- Existing fire exit sign
- Denotes directional arrow on existing fire exit sign
- Existing exit sign - internally illuminated
- Existing self closing automatic release
- Electrical shut-off point for building

GROUND FLOOR
FIRE PLAN

TOLPUDDLE HOUSE

TPH/FP/1M

SCALE 1:200 at A3
15th AUGUST 2006

