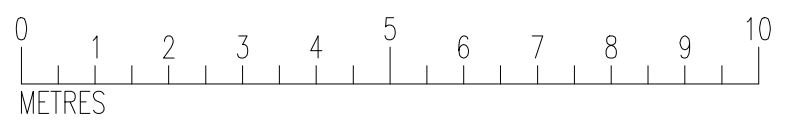
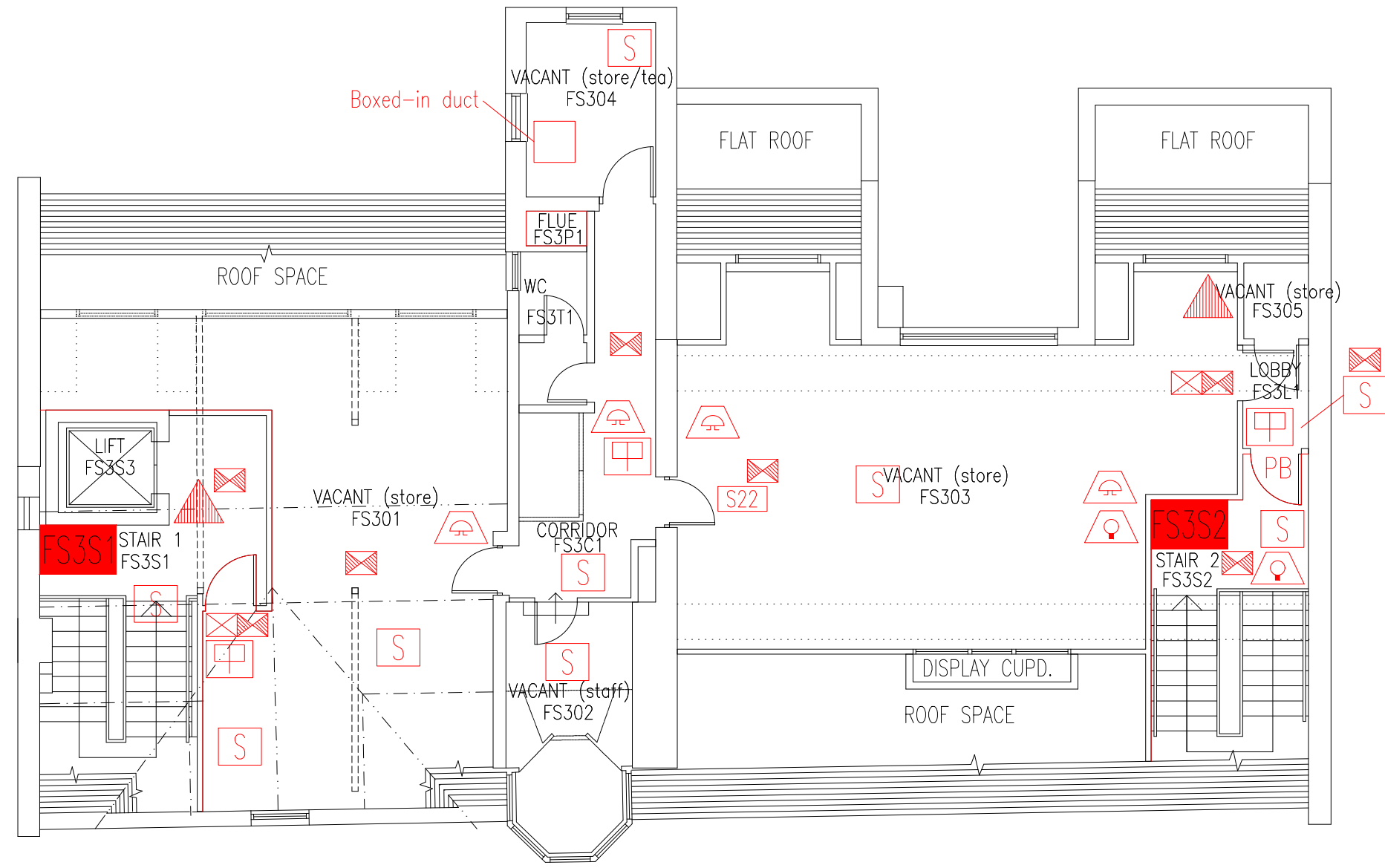


DATE	REVISION
A 15.4.10	PLAN UPDATED FOLLOWING FSO'S SURVEY
B 15.11.10	FS301 & FS303 UPDATED TO "STORE"
C 28.10.14	SMOKE DETECTOR ADDED IN FS302 FOLLOWING FSO SURVEY
D 21.11.16	EXTINGUISHER POSITIONS & TYPES UPDATED
E 27.9.17	FS301, FS302, FS304 & FS305 UPDATED TO "VACANT".
F 25.11.22	FS303 UPDATED TO "VACANT".



THIS FIRE SAFETY PLAN IS GENERALLY BASED ON INFORMATION PROVIDED BY BU'S FIRE SAFETY OFFICER. IT IS THE RESPONSIBILITY OF ALL USERS OF THIS PLAN TO CHECK THE INFORMATION PROVIDED TO CONFIRM THE EXACT POSITIONS OF THE FIRE SAFETY EQUIPMENT, CAVITY BARRIERS ETC.

THIRD FLOOR
FIRE PLAN

THE OLD FIRE
STATION

FS/EP/4F

SCALE 1:100 at A3
FEBRUARY 2006

- Key to Fire Symbols
- Existing fire resisting construction 30 min.
 - Existing wheelchair refuge zone
 - Existing call point - manual
 - Existing 6 litre P50 foam fire extinguisher
 - Existing exit sign - internally illuminated
 - Existing emergency lighting luminaire
 - Existing audible warning device
 - Existing visual warning device
 - Existing smoke detector
 - Existing pushbar door ironmongery
 - Existing fire exit sign

