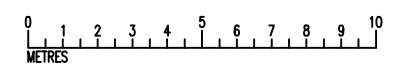
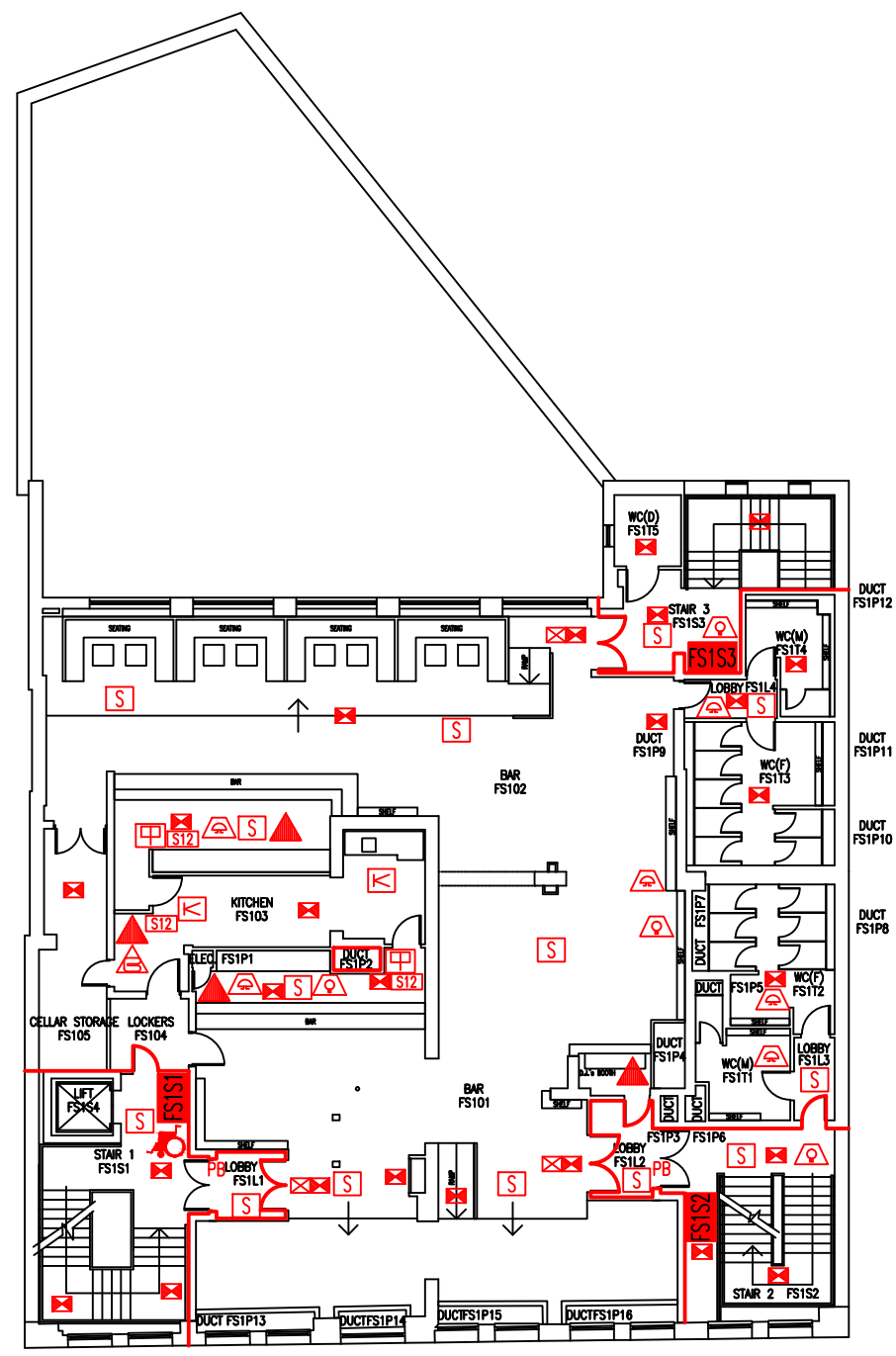


DATE	REVISION
A 18.12.06	FIRE BARRIER AROUND STAIR 2 AMENDED
B 15.4.10	PLAN UPDATED FOLLOWING FSD'S SURVEY
C 27.11.12	PLAN UPDATED FOLLOWING FSD'S SURVEY
D 26.9.16	EXTINGUISHER POSITIONS & TYPES UPDATED
E 27.11.12	FS102 UPDATED FROM "BISTRO" TO "BAR" FS103 UPDATED FROM "WASH-UP" TO "KITCHEN"



- Key to Fire Symbols
- Existing fire resisting construction 30 min.
 - Existing wheelchair refuge zone
 - Existing Evac chair
 - Existing call point - manual
 - Existing 6 litre P50 foam fire extinguisher
 - Existing fire blanket
 - Existing emergency lighting luminaire
 - Existing exit sign - internally illuminated
 - Existing audible warning device
 - Existing visual warning device
 - Existing smoke detector
 - Existing heat detector
 - Existing pushbar door ironmongery
 - Existing fire action sign - general

FIRST FLOOR
FIRE PLAN

THE OLD FIRE
STATION

FS/FP/2E

SCALE 1:200 at A3
FEBRUARY 2006

