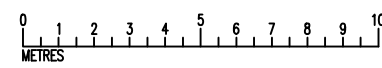
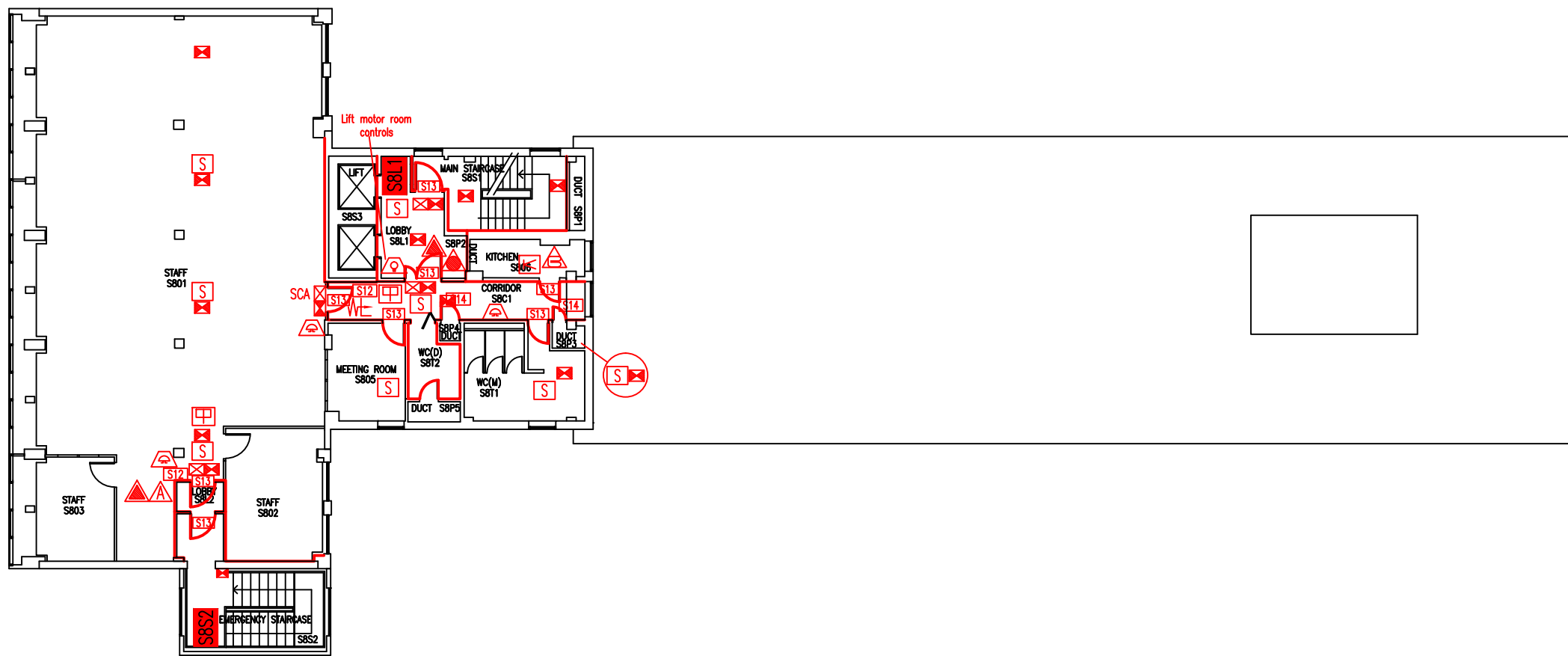


DATE	REVISION
A 5.9.06	CROSS-CORRIDOR DOORS AMENDED TO AS EXISTING ON SITE
B 29.4.08	UPDATE TO SUIT REFURBISHMENT FOR ITS
C AUG.09	DOOR / PARTITION UPGRADE BETWEEN LIFT LOBBY & STAIR 1
D 18.5.10	PLAN UPDATED FOLLOWING CAPITAL WORKS TO REMOVE ROOM SB04
E 28.9.10	PLAN UPDATED FOLLOWING FSD SURVEY
F 6.3.14	SB02 CHANGED FROM MEETING ROOM TO OFFICE
G 10.2.15	SB05 CHANGED FROM OFFICE TO MEETING ROOM



- Key to Fire Symbols (as existing 28/9/10)
- Existing fire resisting construction 30 min.
 - Existing wheelchair refuge zone
 - Existing call point - manual
 - Existing AFFF fire extinguisher
 - Existing CO2 fire extinguisher
 - Existing foam fire extinguisher
 - Existing 1x1 metre fire blanket
 - Existing exit sign - internally illuminated
 - Existing emergency lighting luminaire - self contained
 - Existing audible warning device - bell
 - Existing visual warning device
 - Existing smoke detector
 - Existing dry riser inlet
 - Electro mechanical lock
 - Existing fire action sign - general
 - Existing fire safety sign - fire door keep shut

EIGHTH FLOOR
FIRE PLAN

STUDLAND HOUSE

SH/FP/10G

SCALE 1:200 at A3
FEBRUARY 2006

