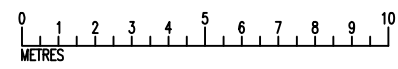
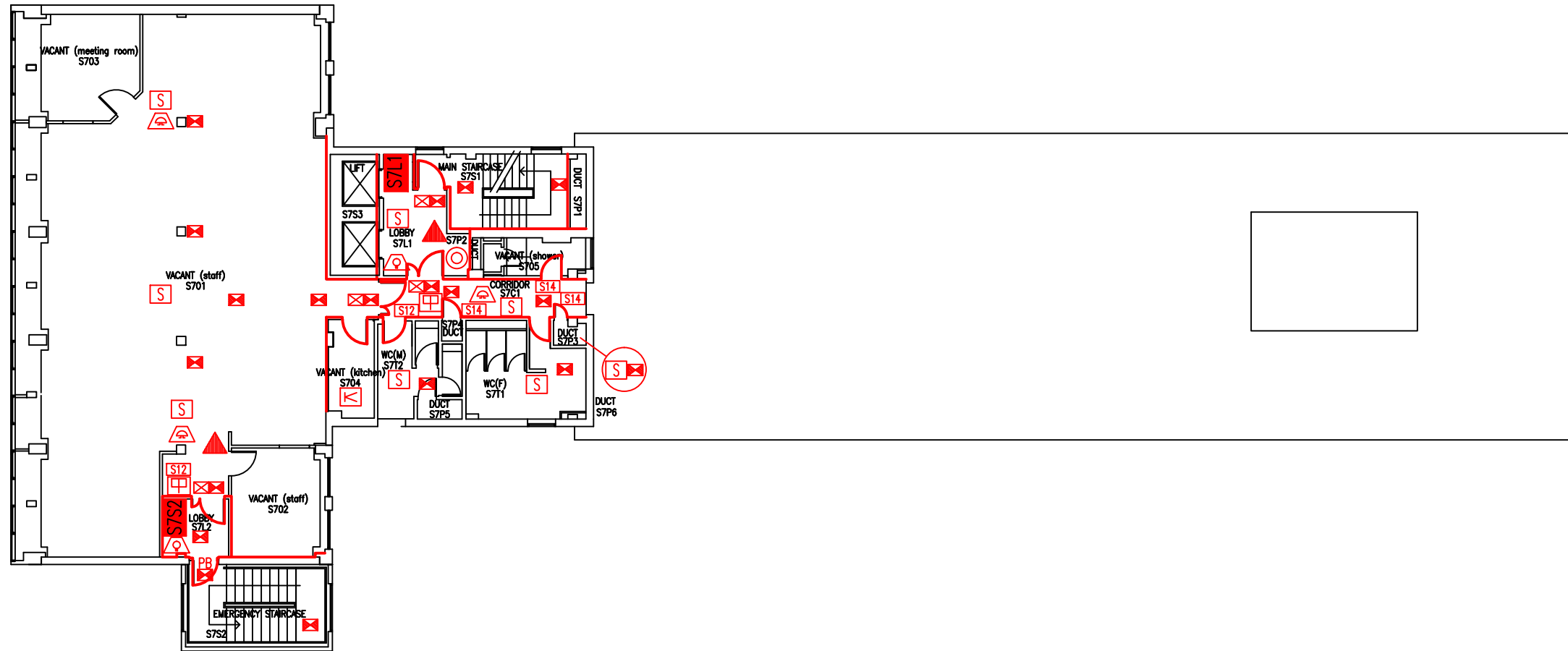


DATE	REVISION
A 1.9.06	LOBBY DOORS AMENDED TO AS EXISTING ON SITE
B 19.8.08	FLOOR PLAN UPDATED FOLLOWING RE-CLAD & FULL SURVEY
C AUG.09	DOOR / PARTITION UPGRADE BETWEEN LIFT LOBBY & STAIR 1
D 21.6.10	PLAN UPDATED FOLLOWING REFURBISHMENT TO FORM EIS SUITE
E 27.9.12	PB ADDED IN EMERGENCY STAIRCASE
F 9.6.14	FORMER OFFICE S704 COMBINED WITH OPEN PLAN OFFICE, SOME ROOMS RENUMBERED TO SUIT.
G 12.1.15	S703 UPDATED TO 'MEETING ROOM'
H 26.8.16	EXTINGUISHER POSITIONS & TYPES UPDATED
J 12.3.20	ROOMS UPDATED TO 'VACANT'.



THIS FIRE SAFETY PLAN IS GENERALLY BASED ON INFORMATION PROVIDED BY BU'S FIRE SAFETY OFFICER. IT IS THE RESPONSIBILITY OF ALL USERS OF THIS PLAN TO CHECK THE INFORMATION PROVIDED TO CONFIRM THE EXACT POSITIONS OF THE FIRE SAFETY EQUIPMENT, CAVITY BARRIERS ETC.

SEVENTH FLOOR  
FIRE PLAN

STUDLAND HOUSE

SH/FP/9J

SCALE 1:200 at A3  
FEBRUARY 2006



- Key to Fire Symbols
- Existing fire resisting construction 30 min.
  - Existing wheelchair refuge zone
  - Existing dry riser inlet
  - Existing call point - manual
  - Existing 6 litre P50 foam fire extinguisher
  - Existing exit sign - internally illuminated
  - Existing emergency lighting luminaire
  - Existing audible warning device
  - Existing visual warning device
  - Existing smoke detector
  - Existing heat detector
  - Existing fire action sign - general
  - Existing fire safety sign - fire door keep locked
  - Existing pushbar door ironmongery

