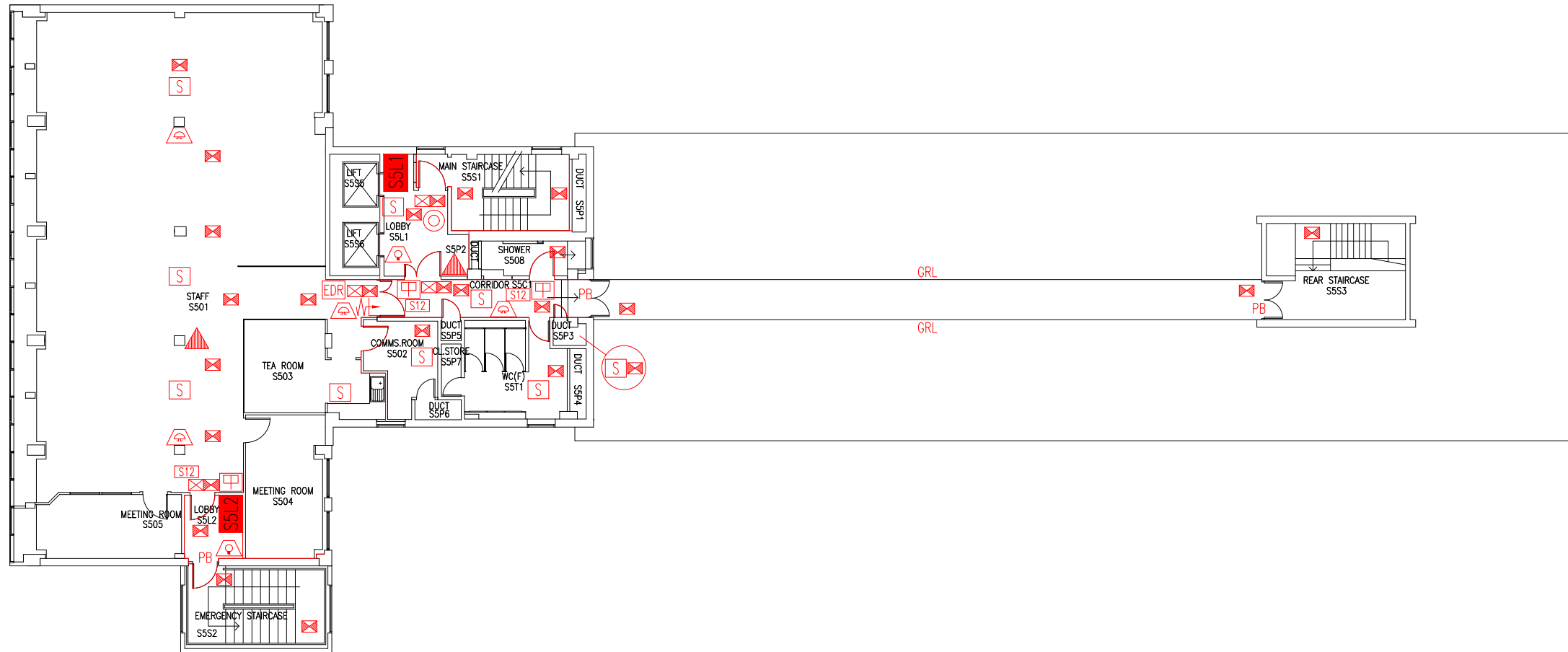


DATE	REVISION
A 4.9.06	S502-8 AMENDED FOLLOWING WORKS TO FORM TEACHING ROOMS PLAN REDRAIN FOLLOWING SURVEY.
B SEPT.08	FLOOR PLAN UPDATED FOLLOWING RECLAD & FULL SURVEY, AS ROOMS VACATED FOLLOWING MOVE TO SH 2nd FLOOR.
C AUG.09	PARTITION & DOOR UPGRADED BETWEEN LIFT LOBBY & STAIR 1
D 14.12.10	UPDATE FOLLOWING MAJOR REFURBISHMENT
E 2.5.12	UPDATE FOLLOWING CONSTRUCTION OF S507
F 20.8.13	UPDATE FOLLOWING CONSTRUCTION OF S508
G 15.3.16	PARTITION LAYOUT MODS TO SUIT NEW SHARED OCCUPANCY OF FLOOR BY ESTATES & F&P, EMERGENCY LIGHT POSITIONS UPDATED FOLLOWING INSTALL OF NEW LED LIGHTING SYSTEM. REMOVAL OF TEA ROOM DOOR.
H 26.9.16	EXTINGUISHER POSITIONS & TYPES UPDATED
J 16.2.18	LAYOUT ALTERATIONS TO SUIT F&P EXPANSION
K 28.3.22	UPDATE FOLLOWING REFURBISHMENT TO SHOWER & WC.
L 29.8.25	LIFT NUMBERS UPDATED.



THIS FIRE SAFETY PLAN IS GENERALLY BASED ON INFORMATION PROVIDED BY BU'S FIRE SAFETY OFFICER. IT IS THE RESPONSIBILITY OF ALL USERS OF THIS PLAN TO CHECK THE INFORMATION PROVIDED TO CONFIRM THE EXACT POSITIONS OF THE FIRE SAFETY EQUIPMENT, CAVITY BARRIERS ETC.

FIFTH FLOOR FIRE PLAN

STUDLAND HOUSE

SH/FP/7L

SCALE 1:200 at A3
JANUARY 2004



- Key to Fire Symbols
- Existing fire resisting construction 30 min.
 - Existing dry riser inlet
 - Existing wheelchair refuge zone
 - Existing call point - manual
 - Existing 6 litre P50 foam fire extinguisher
 - Existing exit sign - internally illuminated
 - Existing emergency lighting luminaire
 - Existing pushbar door ironmongery
 - Guarding handrail
 - Existing electro mechanical lock
 - Existing audible warning device
 - Existing visual warning device
 - Existing smoke detector
 - Existing heat detector
 - Existing fire action sign - general
 - Existing fire exit sign
 - Existing emergency door release call point - manual

