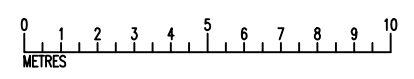
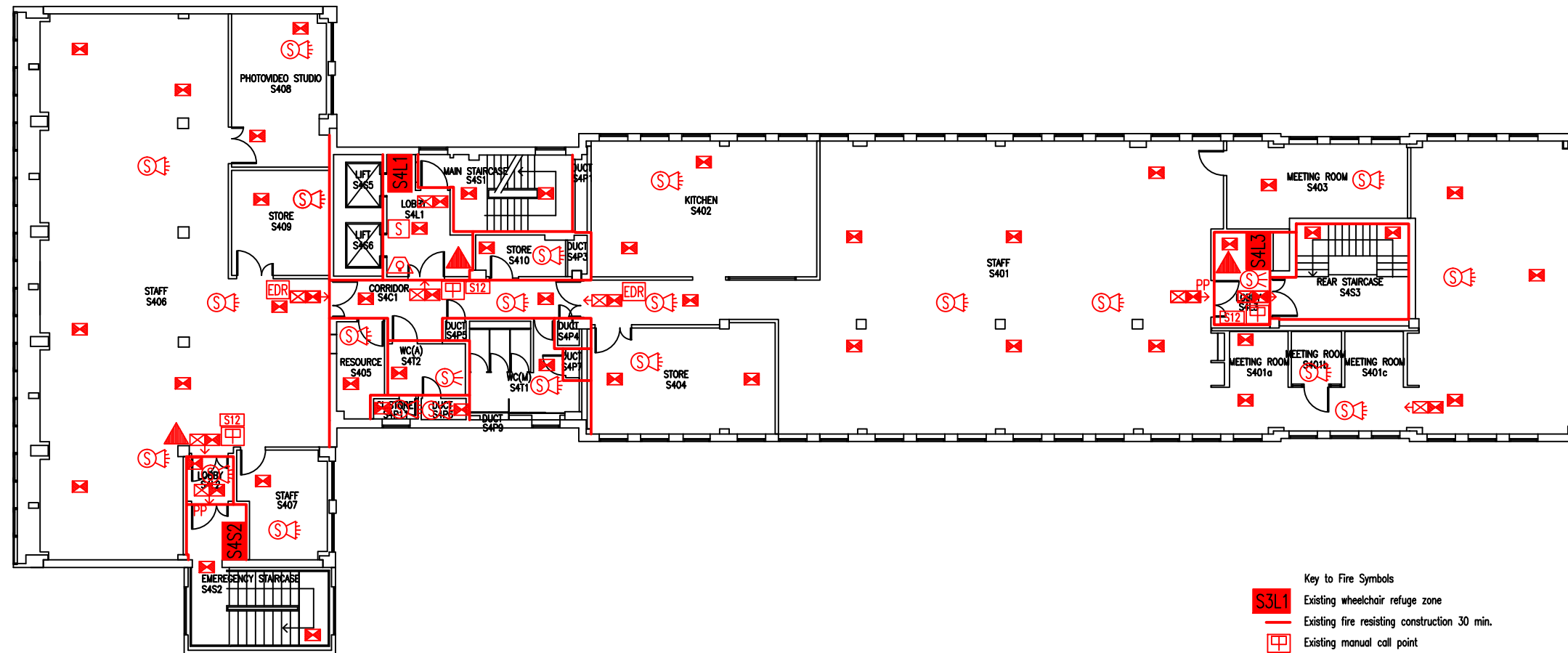


DATE	REVISION
A 5.9.06	PLAN AMENDED FOLLOWING WORKS TO FORM IHCS CSL LABS AND FURTHER SURVEY WORK.
B SEPT.08	PLAN UPDATED FOLLOWING RECLAD, S414 CHANGED TO CLEANERS STORE, S415 VACATED BY ITS
C OCT.09	UPDATE FOLLOWING WORKS FOR HSC & FSD
D 28.9.10	UPDATE FOLLOWING FSD SURVEY
E 18.8.11	S405/6 COMBINED TO FORM WASH-UP FACILITY FOR HSC.
F 27.9.12	GAS CYLINDERS UPDATED. SCA ADDED IN CORRIDORS
G 4.10.13	UPDATE FOLLOWING WORKS TO FORM SKILLS LABS & STORES S401-S410
H 14.4.15	S404 & S416 UPDATED TO HAVE "DOOR & A HALF" SETS
J 8.1.16	S415 CHANGED TO 'STAFF'
K 6.6.17	S415 CHANGED TO 'STORE'
L 23.7.21	UPDATE FOLLOWING REFURBISHMENT



- Key to Fire Symbols
- S3L1 Existing wheelchair refuge zone
 - Existing fire resisting construction 30 min.
 - M Existing manual call point
 - P50 Existing 6 litre P50 foam fire extinguisher
 - E Existing internally illuminated exit sign
 - L Existing emergency lighting luminaire
 - A Existing audible warning device
 - V Existing visual warning device
 - S Existing smoke detector
 - S&B Existing combined smoke detector & beacon
 - S&B&A Existing combined smoke detector, sounder & beacon
 - S12 Existing fire action sign - general
 - ← Denotes directional arrow on existing fire exit sign
 - EDR Existing manual emergency door release call point
 - PP Existing pushpad door ironmongery

THIS FIRE SAFETY PLAN IS GENERALLY BASED ON INFORMATION PROVIDED BY BU'S FIRE SAFETY OFFICER. IT IS THE RESPONSIBILITY OF ALL USERS OF THIS PLAN TO CHECK THE INFORMATION PROVIDED TO CONFIRM THE EXACT POSITIONS OF THE FIRE SAFETY EQUIPMENT, CAVITY BARRIERS ETC.

FOURTH FLOOR
FIRE PLAN

STUDLAND HOUSE

SH/FP/6L

SCALE 1:200 at A3
JANUARY 2006

