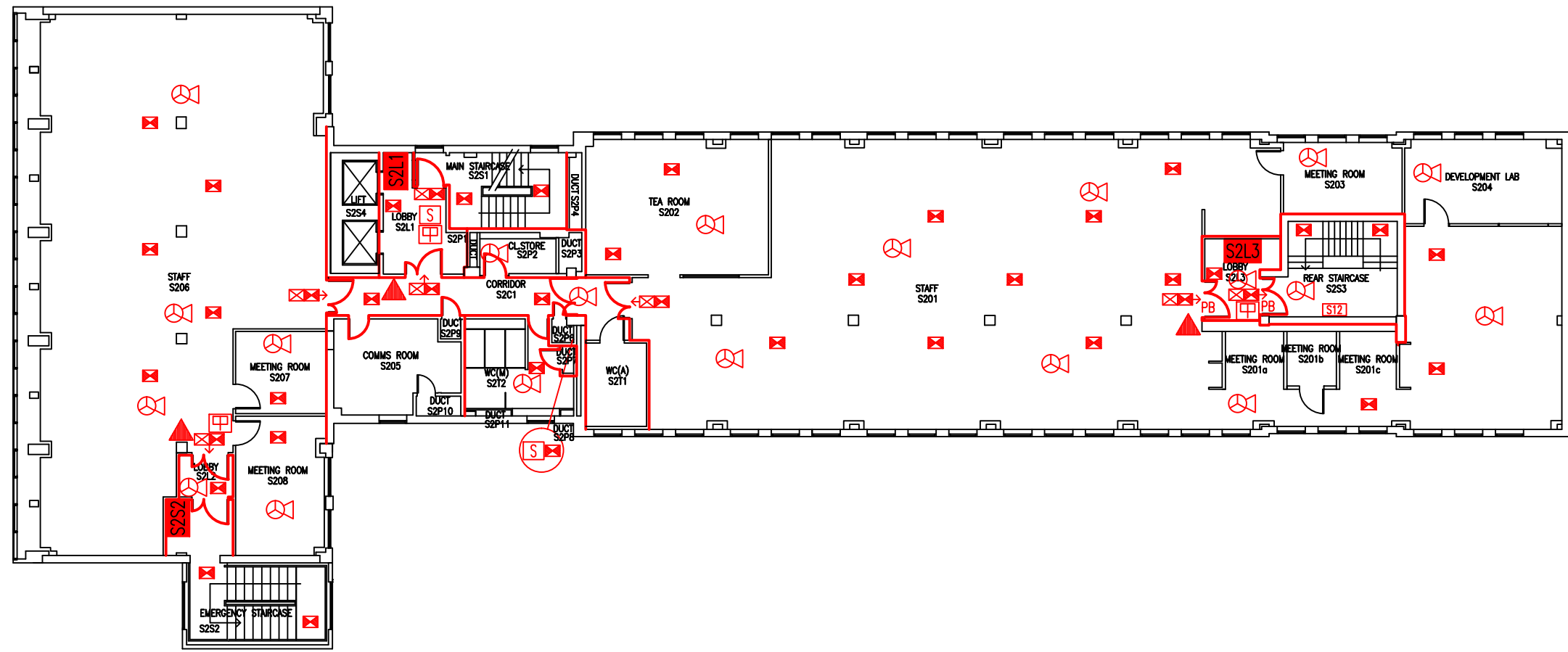


DATE	REVISION
A 30.8.06	CROSS-CORRIDOR DOORS AMENDED TO AS EXISTING ON SITE
B 12.1.08	UPDATE - RECLAD, CORE AREA, ALTERATIONS TO OFFICES FOR AS & FORMATION OF LARGE SEMINAR ROOM FOR HSC (CLASSED GEN-TT)
C AUG.09	DOOR / PARTITION BETWEEN LIFT LOBBY & STAIR 1 UPGRADED, DOORS TO REAR STAIRCASE & S206 UPGRADED.
D DEC.09	LIGHTING UPGRADE TO CORRIDORS S2C1, S2C2 & S2C4
E DEC.09	PLAN UPDATED FOLLOWING FSO SURVEY
F 28.9.10	GENERAL UPDATE FOLLOWING FSO SURVEY
G 27.9.12	SCA ADDED TO CORRIDOR DOOR. VISUAL WARNING DEVICE ADDED TO EMERGENCY STAIRCASE
H 28.9.13	UPDATE FOLLOWING WORKS TO FORM S214 & S214a
J 12.1.15	S216 UPDATED TO WORKSHOP, S206 CHANGED FROM EXAMINATIONS TO TEACHING ROOM.
K 26.9.16	EXTINGUISHER POSITIONS & TYPES UPDATED
L 12.7.18	S202, S203, S206 & S217-9 UPDATED TO 'VACANT'. S204 UPDATED TO 'STORE'.
M 8.8.18	S217 & S219 UPDATED TO 'MEETING ROOM'.
N 28.8.18	S218 UPDATED TO 'MEETING ROOM'.
P 27.3.19	PLAN UPDATED TO SHOW AREA BEING REFURBISHED.
Q 9.10.19	PLAN UPDATED FOLLOWING REFURBISHMENT.



THIS FIRE SAFETY PLAN IS GENERALLY BASED ON INFORMATION PROVIDED BY BU'S FIRE SAFETY OFFICER. IT IS THE RESPONSIBILITY OF ALL USERS OF THIS PLAN TO CHECK THE INFORMATION PROVIDED TO CONFIRM THE EXACT POSITIONS OF THE FIRE SAFETY EQUIPMENT, CAVITY BARRIERS ETC.

SECOND FLOOR
FIRE PLAN

STUDLAND HOUSE

SH/FP/4Q

SCALE 1:200 at A3
JANUARY 2008



- Key to Fire Symbols (as existing)
- Existing fire resisting construction 30 min.
 - Existing wheelchair refuge zone
 - Existing manual call point
 - Existing 6 litre P50 foam fire extinguisher
 - Existing internally illuminated exit sign
 - Existing emergency lighting luminaire
 - Existing audible warning device
 - Existing triple detector (optical / CO / heat) & sounder
 - Existing fire action sign - general
 - Denotes directional arrow on existing fire exit sign
 - Existing pushbar door ironmongery

