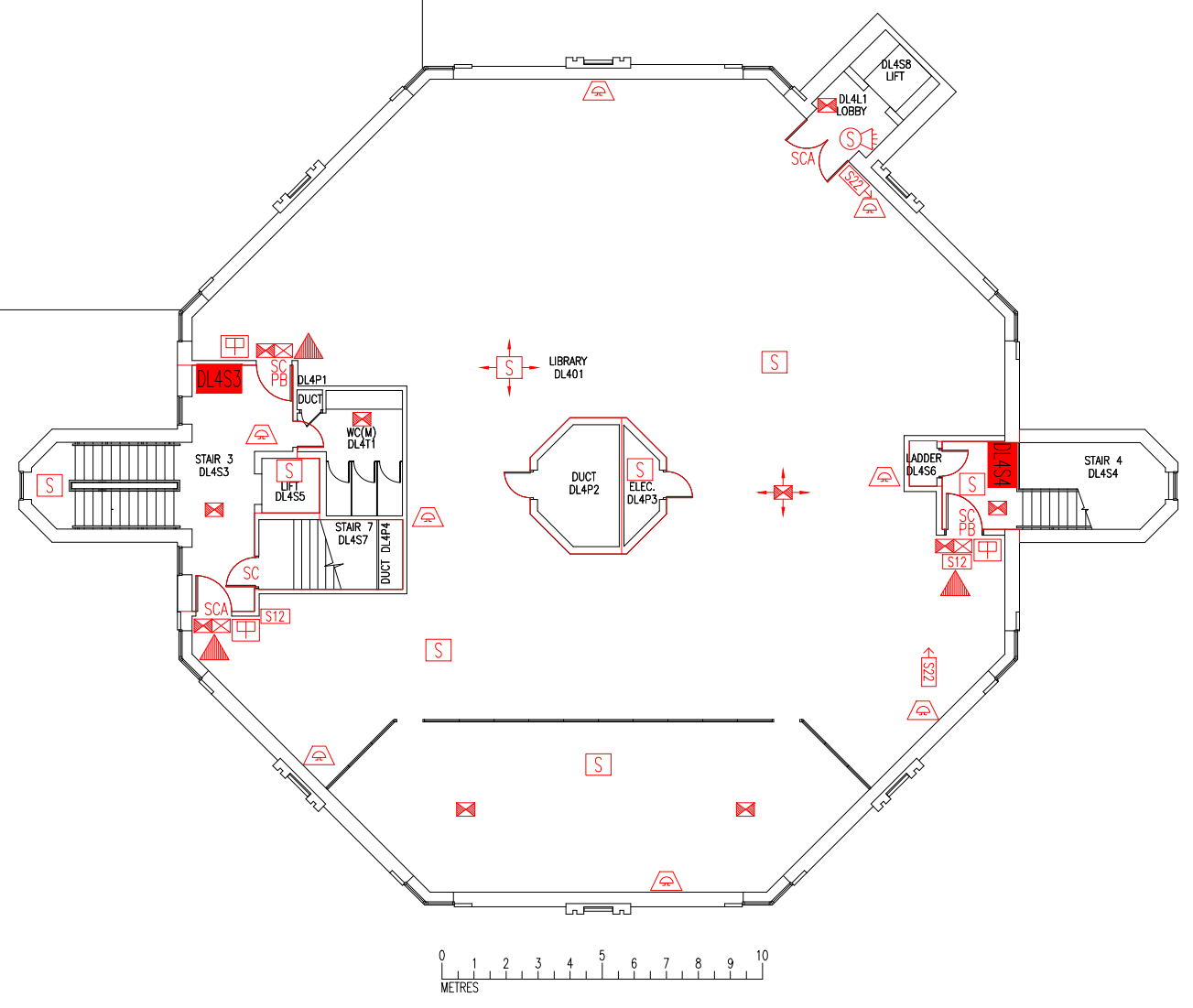


- Key to Fire Symbols
- DL4S3 Existing wheelchair refuge zone
 - Existing fire resisting construction 30 min.
 - Existing 6 litre P50 foam fire extinguisher
 - Existing call point – manual
 - Existing exit sign – internally illuminated
 - S22 Existing fire exit sign
 - Denotes directional arrow on existing fire exit sign
 - Existing emergency lighting luminaire
 - Existing audible warning device
 - S Existing smoke detector
 - Existing combined smoke detector, sounder & beacon
 - PB Existing pushbar door ironmongery
 - SC Existing self closing device fitted to door
 - SCA Existing self closing automatic release
 - S12 Existing fire action sign – general
 - Area covered by existing emergency lighting
 - Area covered by existing smoke detection

DATE	REVISION
A 29.3.10	PLAN UPDATED FOLLOWING FSO'S SURVEY
B 22.8.12	PLAN UPDATED FOLLOWING FSO'S SURVEY
C 13.3.13	WHOLE OF SMC LIBRARY FLOOR COMBINED ON ONE PLAN, ORIENTATION OF EXTENSION, & DRAWING TITLE REVISED TO SUIT.
D 19.8.13	DOORS REMOVED FROM GLAZED PARTITION TO CREATE LARGER DL401
E 23.9.16	EXTINGUISHER POSITIONS & TYPES UPDATED
F 9.1.24	NEW LIFT & LOBBY ADDED.



THIS FIRE SAFETY PLAN IS GENERALLY BASED ON INFORMATION PROVIDED BY BU'S FIRE SAFETY OFFICER. IT IS THE RESPONSIBILITY OF ALL USERS OF THIS PLAN TO CHECK THE INFORMATION PROVIDED TO CONFIRM THE EXACT POSITIONS OF THE FIRE SAFETY EQUIPMENT, CAVITY BARRIERS ETC.

FOURTH FLOOR
FIRE EQUIPMENT
PLAN

SIR MICHAEL
COBHAM LIBRARY

DHL/FP/5F

SCALE 1:200 at A3
FEBRUARY 2004

