

DATE	REVISION
A 29.3.10	PLAN UPDATED FOLLOWING FSO'S SURVEY
B 22.8.12	PLAN UPDATED FOLLOWING FSO'S SURVEY
C 13.3.13	WHOLE OF SMC LIBRARY FLOOR COMBINED ON ONE PLAN, ORIENTATION OF EXTENSION, & DRAWING TITLE REVISED TO SUIT.
D 9.9.14	PLAN UPDATED FOLLOWING REMOVAL OF DL302 & DL303, BRIDGE LINK CONSTRUCTION SITE SHOWN.
E 13.1.15	NEW LOBBY ADDED TO SUIT BRIDGE LINK FROM S.C.
F 23.9.16	EXTINGUISHER POSITIONS & TYPES UPDATED
G 9.1.24	LIFT & LOBBY ADDED.

- Key to Fire Symbols (existing)
- DL2S3 Existing wheelchair refuge zone
 - Existing fire resisting construction 30 min.
 - ▲ Existing 6 litre P50 foam fire extinguisher
 - ☐ Existing call point – manual
 - ☒ Existing exit sign – internally illuminated
 - S22 Existing fire exit sign
 - ← Denotes directional arrow on existing fire exit sign
 - ☒ Existing emergency lighting luminaire – self contained
 - ☒ Existing audible warning device – bell
 - PB Existing pushbar door ironmongery
 - SC Existing self closing device fitted to door
 - SCA Existing self closing automatic release
 - S12 Existing fire action sign – general
 - S Existing smoke detector
 - S Existing combined smoke detector, sounder & beacon
 - ☒ Area covered by existing emergency lighting
 - S Area covered by existing smoke detection

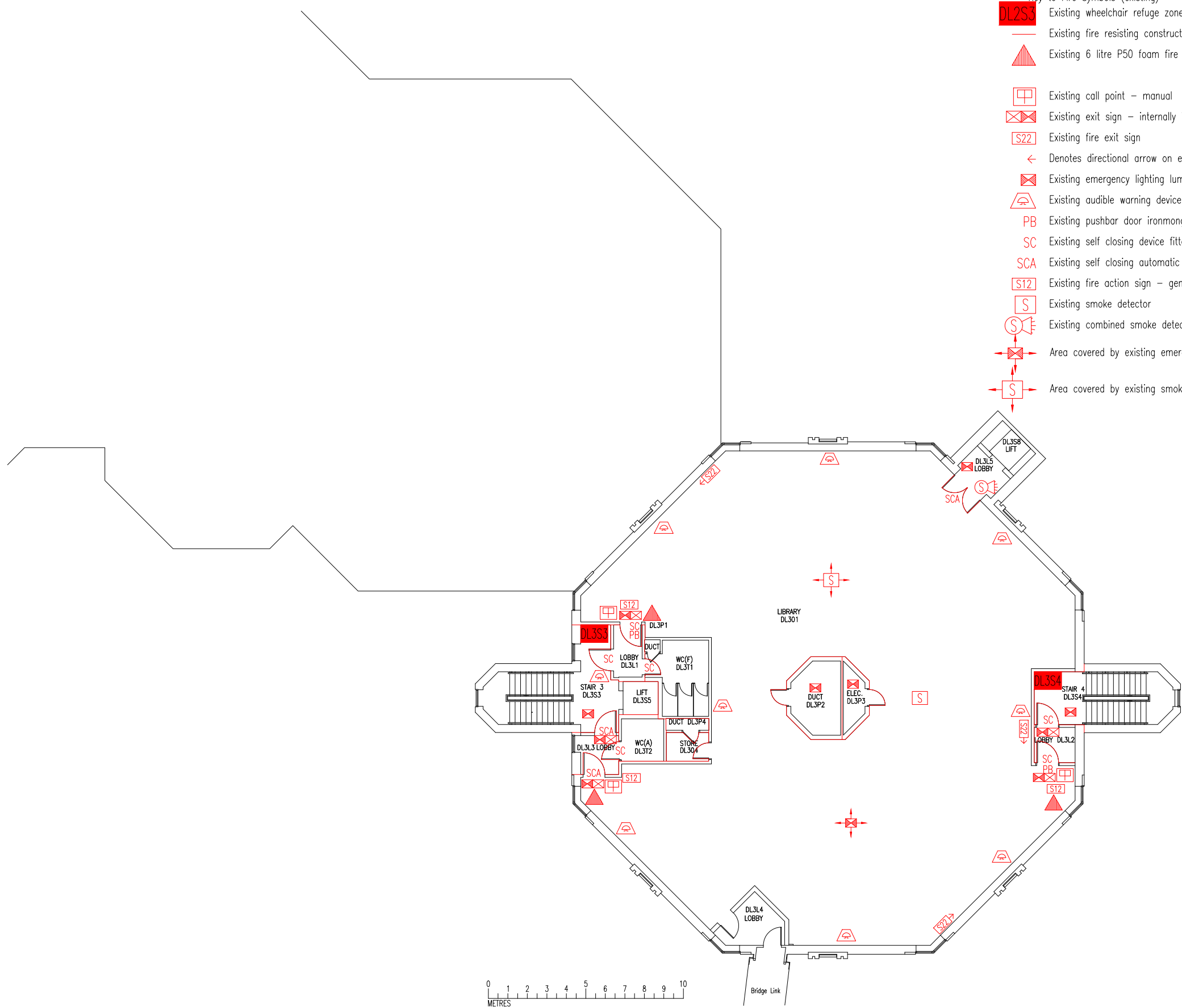
THIS FIRE SAFETY PLAN IS GENERALLY BASED ON INFORMATION PROVIDED BY BU'S FIRE SAFETY OFFICER. IT IS THE RESPONSIBILITY OF ALL USERS OF THIS PLAN TO CHECK THE INFORMATION PROVIDED TO CONFIRM THE EXACT POSITIONS OF THE FIRE SAFETY EQUIPMENT, CAVITY BARRIERS ETC.

THIRD FLOOR
FIRE EQUIPMENT
PLAN

SIR MICHAEL
COBHAM LIBRARY

DHL/FP/4G

SCALE 1:200 at A3
FEBRUARY 2004



0 1 2 3 4 5 6 7 8 9 10
METRES