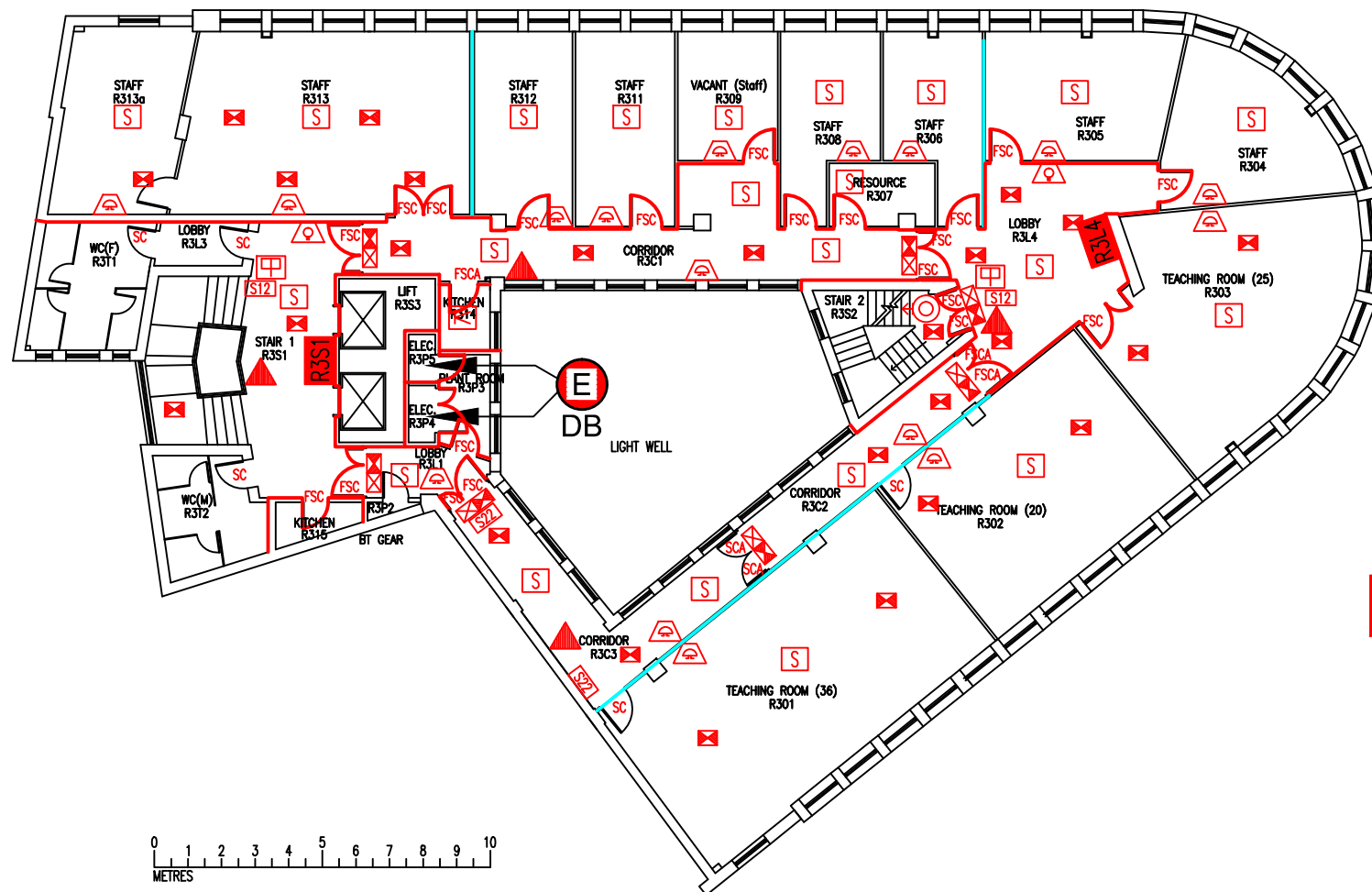


DATE	REVISION
A 29.3.12	R306 CHANGED FROM STAFF TO TEACHING ROOM (TEMP).
B 11.9.12	R306 CHANGED BACK TO HSC OFFICE.
C 12.10.12	R313 CHANGED TO KITCHEN
D 17.4.13	ALTERATIONS & REFURBISHMENT TO PART OF FLOOR, FIRE RESISTING CONSTRUCTION LINES REMOVED AROUND WCS & CROSS CORRIDOR DOORS ADJ. R301 TO F50 COMMENTS.
E 27.1.15	R304 CHANGED TO 'MEETING ROOM'
F 28.4.15	CHANGES TO CORRIDOR OUTSIDE ROOM R309
G 23.9.16	EXTINGUISHER POSITIONS & TYPES UPDATED
H 19.1.17	R304 & R313a CHANGED FROM MEETING ROOMS TO STAFF
J 22.2.18	R309 CHANGED TO 'VACANT (Staff)'



Key to Existing Services Symbols :

E Electric distribution board
DB

Key to Fire Symbols

- Existing fire resisting construction 30 min.
- Existing cavity barrier
- R3S1** Existing wheelchair refuge zone
- Existing dry riser outlet
- Existing 6 litre P50 foam fire extinguisher
- Existing call point – manual
- Existing audible warning device
- Existing visual warning device
- Existing smoke detector
- Existing heat detector
- Existing exit sign – internally illuminated
- Existing emergency lighting luminaire
- S12** Existing fire action sign – general
- S22** Existing fire exit sign
- FSC** Existing self closing device fitted to fire-resisting door
- FSCA** Existing self closing, automatic release device fitted to fire-resisting door
- SC** Existing self closing device fitted to non fire-resisting door
- SCA** Existing self closing, automatic release device fitted to non fire-resisting door

THIRD FLOOR
FIRE EQUIPMENT
PLAN

ROYAL LONDON
HOUSE

RLH/FP/3J

SCALE 1:200 at A3
MAY 2010

