

Biomass Fire - Usefull Information

Version 1, October 2013

Access Key into the Biomass Building and the Hydraulic Fuel Store door key can be found in the key press fitted to the building's wall. The key press number is 1342.

Key facts:

- 500kW Biomass boiler with 17,500l water tank in plant room.
- Underground fuel store (approx. 90m³ total volume). Approx. size 5m x 5m x 3.5m deep.
- Maximum volume of wood chip in underground fuel store is 60m³ (approx. 30% moisture content), approxiamte total weight of fuel 13 tonnes.

Boiler System Response to a Fire Alarm:

- In the event the fire alarms are triggered, the boiler goes into manual shutdown.
- Manual shutdown is different to "Emergency Stop" as it maintains the boiler safety systems (eg: maintains power to pumps for heat dissipation & bumpback protection).
- The gas safety valve is activated, cutting the gas supply from the boiler
- All Electrical Systems remain live after fire alarm.
- To ensure all electrical systems are disabled. the Emergency Stop must be activated (located on panel to the left of the entrance door) (1).

Access to Fuel Store (Confined Space):

Opened via external panel by entrance doors (8) or manual hand pump inside boiler house (4).

If Emergency Stop has been activated, there will be no moving parts and no Electrical Hazards.

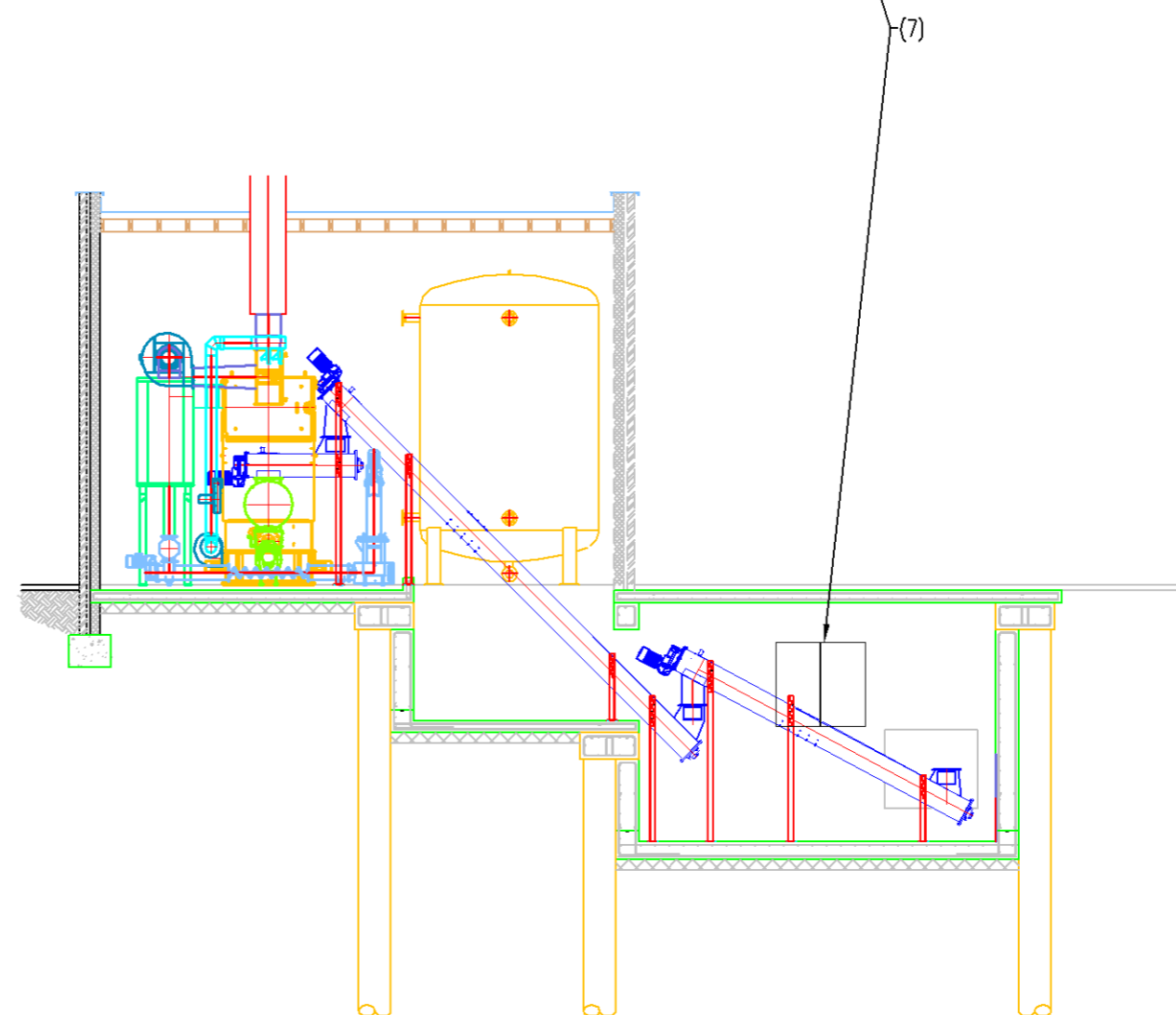
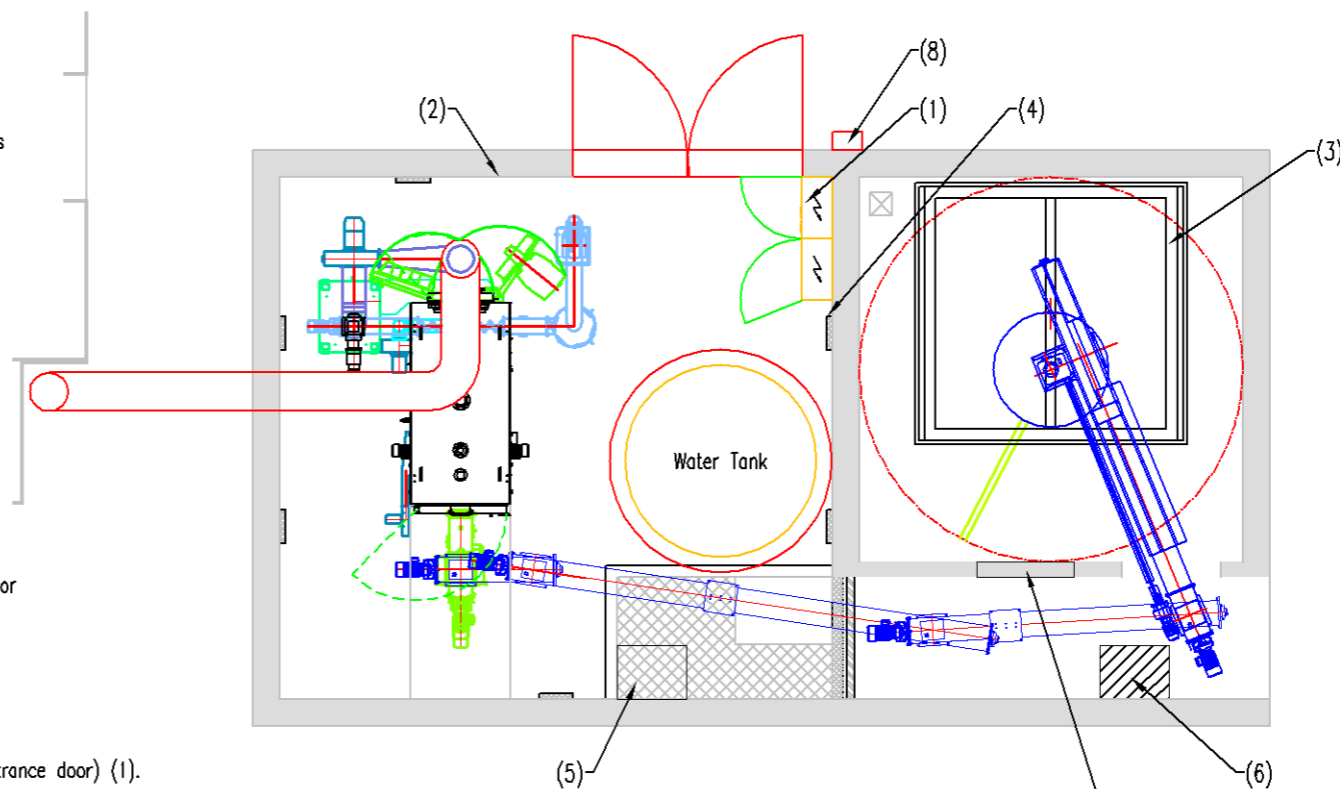
- Through hydraulic door in road (3)
- Through boiler house into auger pit (two ladders) and through emergency hatch (5) (7).

Access to Auger Pit (Confined Space):

- Through boiler house (down two ladders) (5).
- Through man hole in road (6).

Layout drawing References (See marked up drawing):

1. Emergency Stop - located on electrical panel by entrance door.
2. Gas Safety Shut Off - located in boiler house to right of the doors.
3. Hydraulic door in road.
4. Hand pump for hydraulic door
5. Access to Auger Pit
6. Man Hole in road - Alternative access to Auger pit.
7. Hatch through to Fuel Store - Alternative access to fuel store through auger pit.
8. Hydraulic door control panel.



DATE	REVISION

FIRE SAFETY
INFORMATION

BIOMASS & FUEL
STORE

PHS/FP/4

SCALE 1:100 at A3
28th OCTOBER 2013