



SELF DECLARATION OF GOOD HEALTH AND CHARACTER

POLICY AND PROCEDURE

NURSING AND MIDWIFERY, ALLIED HEALTH PROFESSIONAL AND SOCIAL WORK STUDENTS

This policy and procedure document has been prepared to advise and guide students and staff regarding their responsibilities related to the specific requirements for good health and good character required by the Nursing and Midwifery Council (NMC) and Health and Care Professions Council. These requirements are an essential part of the course of study for theory and placement.

As part of the University's duty as a provider of NHS approved and other Professional courses, Bournemouth University must ensure that students are aware of their responsibilities regarding reporting health and good character. This is especially important for attending placement during training and also as a requirement for successful registration on completion of their course.

To be assured that each student has continued good health and character he or she should complete a "declaration of good health and character" form at the beginning of each year of study. This is mandatory. The procedure for this is shown in Appendix A.

In addition, paper copy declarations at the end of the 3rd year of training also need to be completed by Nursing and Midwifery students. Year or Academic Advisers countersign the forms to confirm theory and practice assignments have been passed and required hours of theory and practice met. This then allows the students to qualify and become registered nurses or midwives with the NMC. This procedure is shown in Appendix B.

GOOD HEALTH

All health professional students must be in good health in order to complete the practice element of the course. Students are in practice for around 50% of their total course period.

In this regard Bournemouth University has a contract with an Occupational Health Provider (currently Southampton University) to ensure all students are appropriately immunised and continue in good health prior to and during their course of study. Therefore, prior to the start of a course and during the course, students undergo a health assessment and, where appropriate, an immunisation programme provided by the OHP.

It is the student's responsibility to ensure that they meet the health requirements of their programme through attendance at Occupational Health appointments, as arranged, and that they ensure the University is made aware of any issues that arise, concerning their health, for the duration of their course.

Examples of Conditions that could affect a person's ability to practise safely include (but are not restricted to)

1. Alcoholism
2. Drug abuse/addiction
3. Serious mental ill health
4. Suffering from a serious communicable disease.

Failure to do so WILL result in the student being withdrawn from placement and may result in unsuccessful completion of the course.

GOOD CHARACTER

Successful completion of the programme will enable students to apply for Professional Registration and accordingly students will be required to meet specified standards of performance and conduct in accordance with the Programme Handbook and the code of Conduct of their Professional Body.

All Professional course students, prior to commencement of the course, are required to declare any convictions such as cautions, reprimands, warnings, bind-overs, convictions, conditional discharges, serious driving offences (including drink driving), penalty notices and on the spot fines. An 'enhanced' Criminal Records Bureau Disclosure (including checks required for the Protection of Children and the Protection of Vulnerable Adults) prior to enrolment will be undertaken – this may show records incurred when they were a juvenile.

The Rehabilitation of Offenders Act (1974) does not allow “spent” offences for those employed in the fields of medicine, nursing, midwifery, allied healthcare professionals or social work. It is therefore essential that applicants declare, as part of the application process, any of those mentioned above. Having a criminal record will not necessarily prevent applicants from gaining a place on one of these training programmes, but we will require full details to be provided to enable us to consider if it would be appropriate to continue with an application. All such cases are dealt with on an individual basis, taking into consideration the professional requirements of the educational programme in question. **Failure to declare any information at application will usually result in an application being rejected.**

Whilst on the course, during theory and practise, if students are subject to any of the above they **MUST** report this to their Academic Adviser/Programme Leader immediately. Any report made is treated on an individual basis and will not necessarily result in withdrawal from the course. **However, Failure to do so will usually result in withdrawal from the course.**

Any behaviour that may bring into question a student’s good character may have implications on their ability to remain on the course and to register successfully on its completion. Therefore, Bournemouth University investigates any incidences fully through their Fitness to Practise (Policy 11H, Fitness to Study (Policy 11J) and Student Disciplinary (Policy 11K) procedures. These policies can be found on the BU website <http://portal.bournemouth.ac.uk/C6/Welfare/default.aspx>.

STUDENTS WHO INTERRUPT AND RETURN TO A COURSE MID YEAR

These students do not have to complete a further self declaration form, if less than 6 months have passed, but will be asked to complete one at the start of the next academic year, in line with the policy above. However, students may be asked to attend an Occupational Health assessment prior to their return.

STUDENTS WHO ARE UNABLE TO COMPLETE THE GOOD HEALTH AND CHARACTER DECLARATION

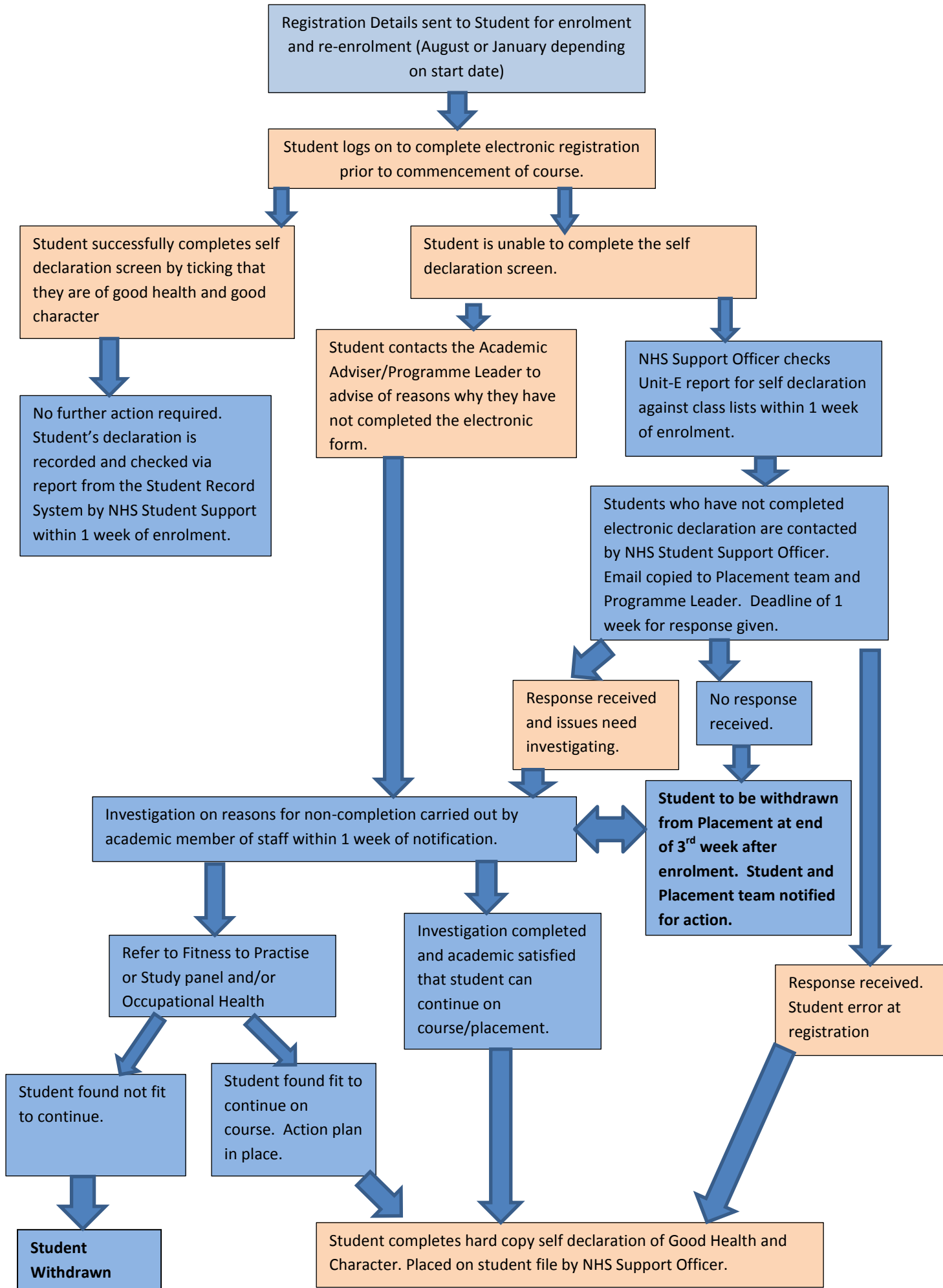
All students who do not feel able to complete the Good Character and Good Health Declaration should contact their Academic Adviser immediately to notify them of the reasons and a plan of action formed based on the individual circumstances of that student. Once the student’s health/character is declared sufficient to commence placements they will be required to complete a paper copy of the declaration.

Students who do not complete an electronic/paper copy declaration will not be allowed to start or continue on placement.

Any non-disclosure regarding health and character issues is taken very seriously and will likely result in removal from the course.

Deirdre Sparrowhawk
Academic Administration Manager
Neil Davidson
NHS Student Support
School of Health & Social Care
3.1.13

APPENDIX A - FLOWCHART FOR PROCESS FOR SELF DECLARATION COMPLETION AT START OF YEAR 1, 2 OR 3



APPENDIX B - FLOWCHART FOR PROCESS FOR SELF DECLARATION COMPLETION AT END OF YEAR 3 FOR REGISTRATION TO PROFESSIONAL PROGRAMME (WHERE APPROPRIATE)

