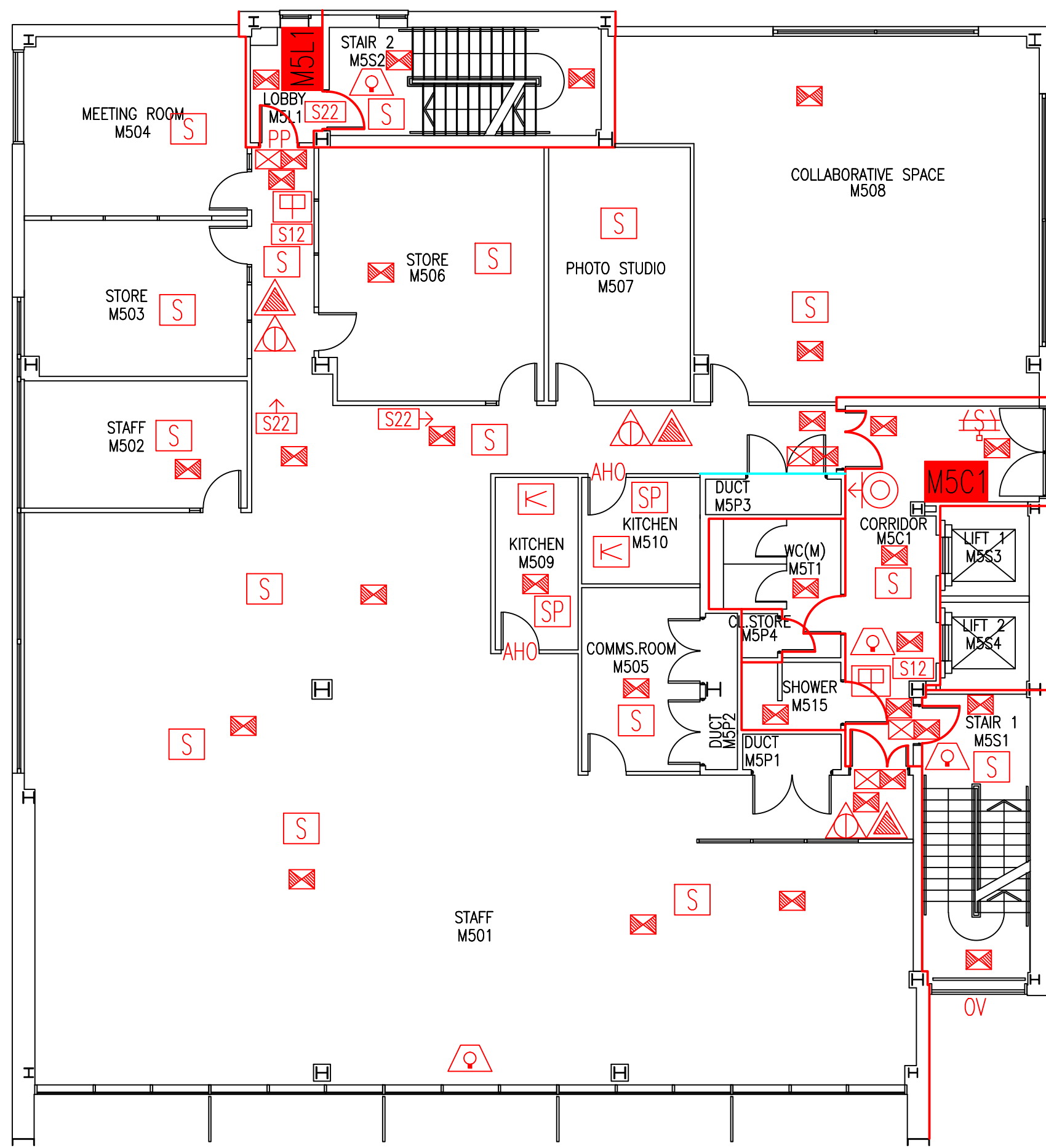
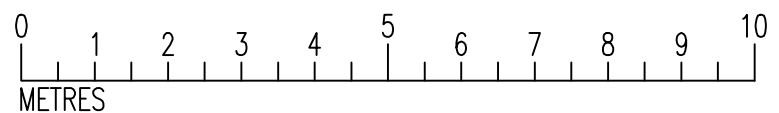


DATE	REVISION
A 26.1.06	M509, M511 & M512 COMBINED TO FORM ONE ROOM
B 21.8.06	QUANTITY 1X VISUAL WARNING DEVICE REMOVED FROM M501
C 18.12.06	SCALE CHANGED TO 1:100. PARTITION ADDED IN M501
D 15.3.07	M501-4 CHANGED TO ICR
E 2.12.11	M508 & M510 CHANGED TO 'STORE'
F 18.12.12	EXTENT OF 'CAVITY BARRIER REQUIRED' REDUCED, & HALF-HOUR FIRE RES. REMOVED FROM CROSS-CORRIDOR DOORS BETWEEN M5C2 & M5C3 FOLLOWING FSO COMMENTS.
G 25.3.15	AHOs & SINGLE-POINT DETECTORS ADDED FOLLOWING FSO'S SURVEY
H 27.5.15	PLAN UPDATED FOLLOWING REFURBISHMENT & ROOM RENUMBERING



- Key to Fire Symbols
- Existing fire resisting construction 30 min.
  - Cavity barrier required
  - M5C1 Existing wheelchair refuge zone
  - Existing CO2 fire extinguisher
  - Existing water fire extinguisher
  - Existing call point – manual
  - Existing dry riser outlet
  - Existing automatic smoke control vent
  - OV Existing opening vent (manual)
  - Existing exit sign – internally illuminated
  - Existing emergency lighting luminaire – self contained
  - Existing visual warning device
  - S Existing smoke detector
  - SP Existing single-point smoke detector
  - K Existing heat detector
  - PP Existing pushpad door ironmongery
  - S12 Existing fire action sign – general
  - S22 Existing fire exit sign
  - AHO Existing acoustic hold-open device fitted to door
  - ← Denotes directional arrow on existing fire exit sign



FIFTH FLOOR  
FIRE PLAN

MELBURY HOUSE

MH/FP/6H

SCALE 1:100 at A3  
12th APRIL 2006

