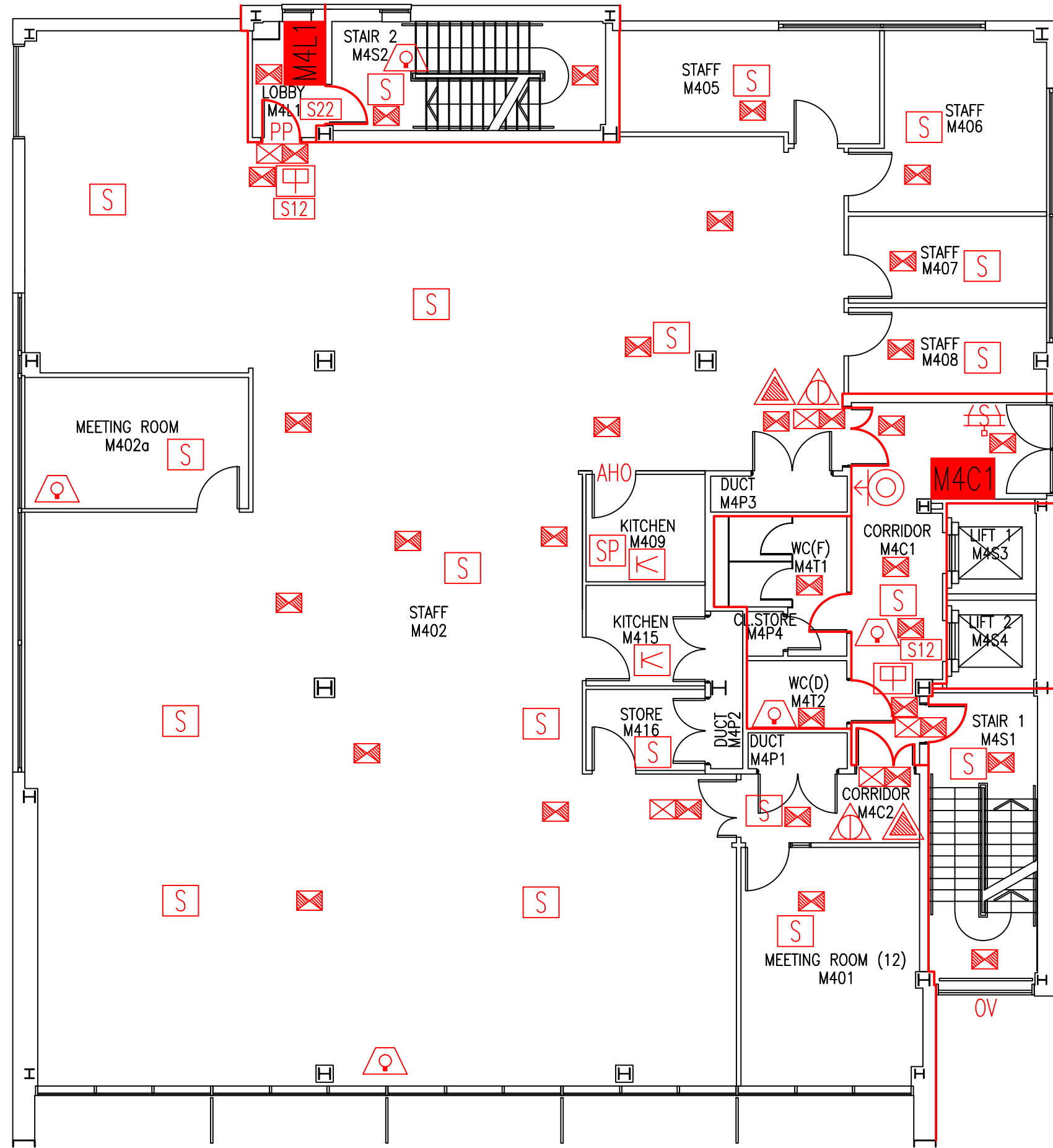
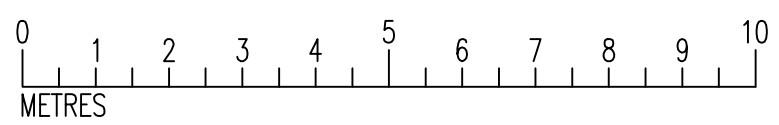


DATE	REVISION
A 17.1.06	M404 & M405 COMBINED TO FORM ONE ROOM
B 18.12.06	SCALE CHANGED TO 1:100
C 17.1.08	PLAN UPDATED FOLLOWING FORMATION OF M402a & b
D 18.11.10	PLAN UPDATED TO SHOW EXISTING ENTRANCE DOOR TO M402
E 14.1.11	PLAN UPDATED FOLLOWING WORKS TO RECONFIGURE M402a
F 5.4.12	PLAN UPDATED FOLLOWING FSO SURVEY
G 24.10.12	DOOR TO M402 REPOSITIONED
H 28.2.13	PLAN UPDATED FOLLOWING WORKS TO RECONFIGURE M402
J 12.11.13	SMOKE DETECTOR POSITIONS UPDATED. M402a, M405 & M408 ROOM NAMES UPDATED
K 25.3.15	AHOs & SINGLE-POINT DETECTOR ADDED; EXTINGUISHER POSITIONS UPDATED FOLLOWING FSO'S SURVEY



- Key to Fire Symbols
- Existing fire resisting construction 30 min.
 - M4C1** Existing wheelchair refuge zone
 - Existing dry riser outlet
 - Existing automatic smoke control vent
 - Existing opening vent (manual)
 - Existing call point – manual
 - Existing exit sign – internally illuminated
 - Existing emergency lighting luminaire – self contained
 - Existing visual warning device
 - Existing smoke detector
 - Existing single-point smoke detector
 - Existing heat detector
 - Existing pushpad door ironmongery
 - Existing fire action sign – general
 - Existing fire exit sign
 - Existing CO2 fire extinguisher
 - Existing water fire extinguisher
 - Existing acoustic hold-open device fitted to door



FOURTH FLOOR
FIRE PLAN

MELBURY HOUSE

MH/FP/5K

SCALE 1:100 at A3
12th APRIL 2005

