

# Meet the Information Security Team



## InfoSec policy

Assisting in the development and maintenance of information security policies.



## Centre of excellence

Developing a centre of excellence for information security.



## Proactive support

Supporting Bournemouth University operational, tactical and strategic needs.



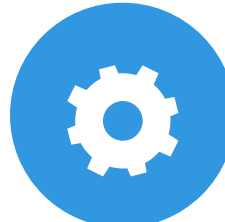
## Monitor

Monitoring current, new and emerging trends.



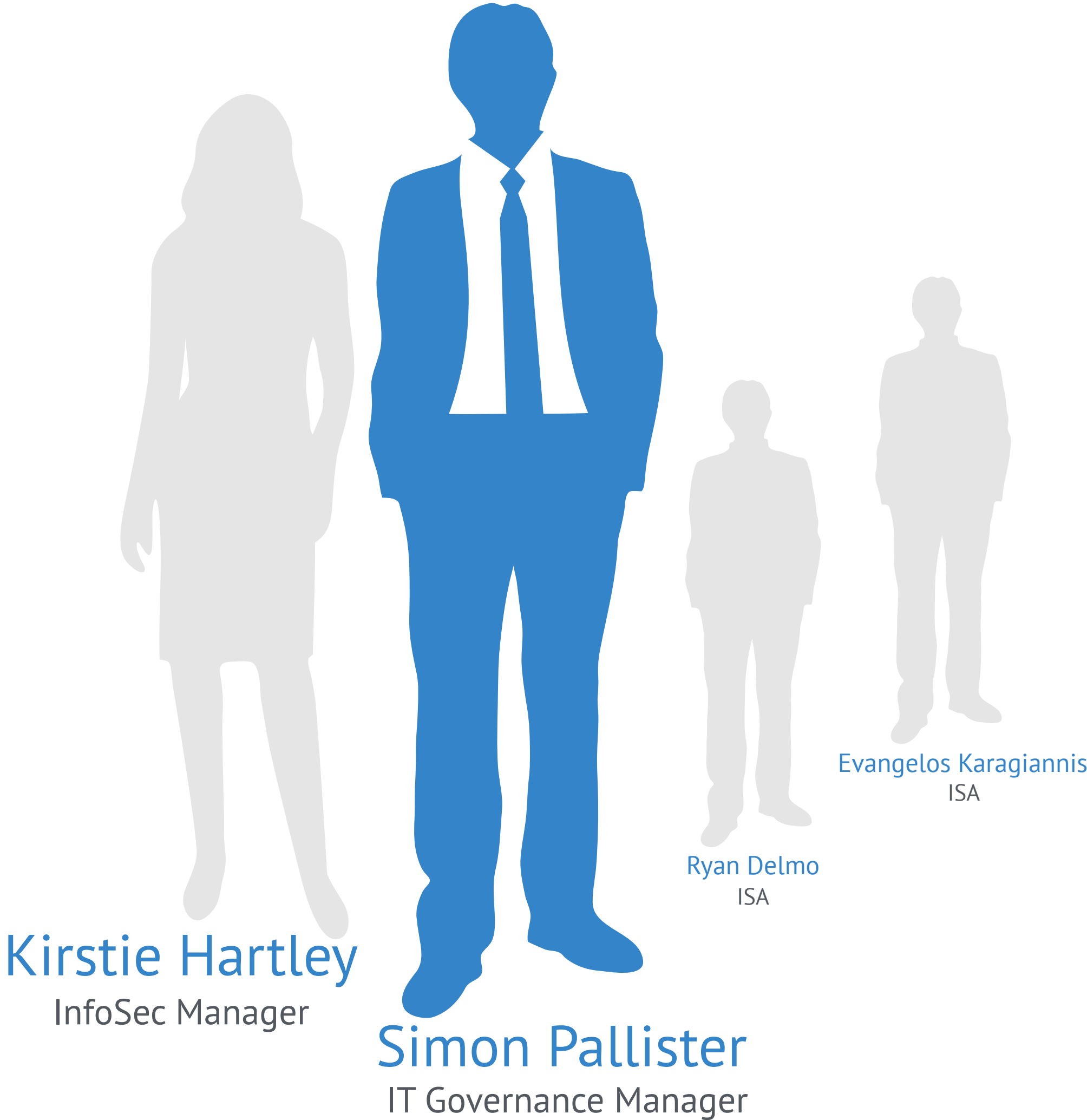
## Promote awareness

Promoting awareness amongst BU staff & students on the latest InfoSec threats.



## Intelligence analysis

Gather and analyse internal and external intelligence information about emerging and changing threats.

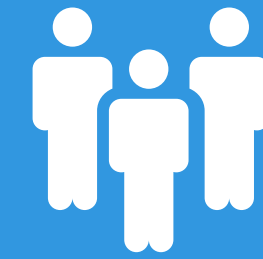


**Kirstie Hartley**  
InfoSec Manager

**Simon Pallister**  
IT Governance Manager

Ryan Delmo  
ISA

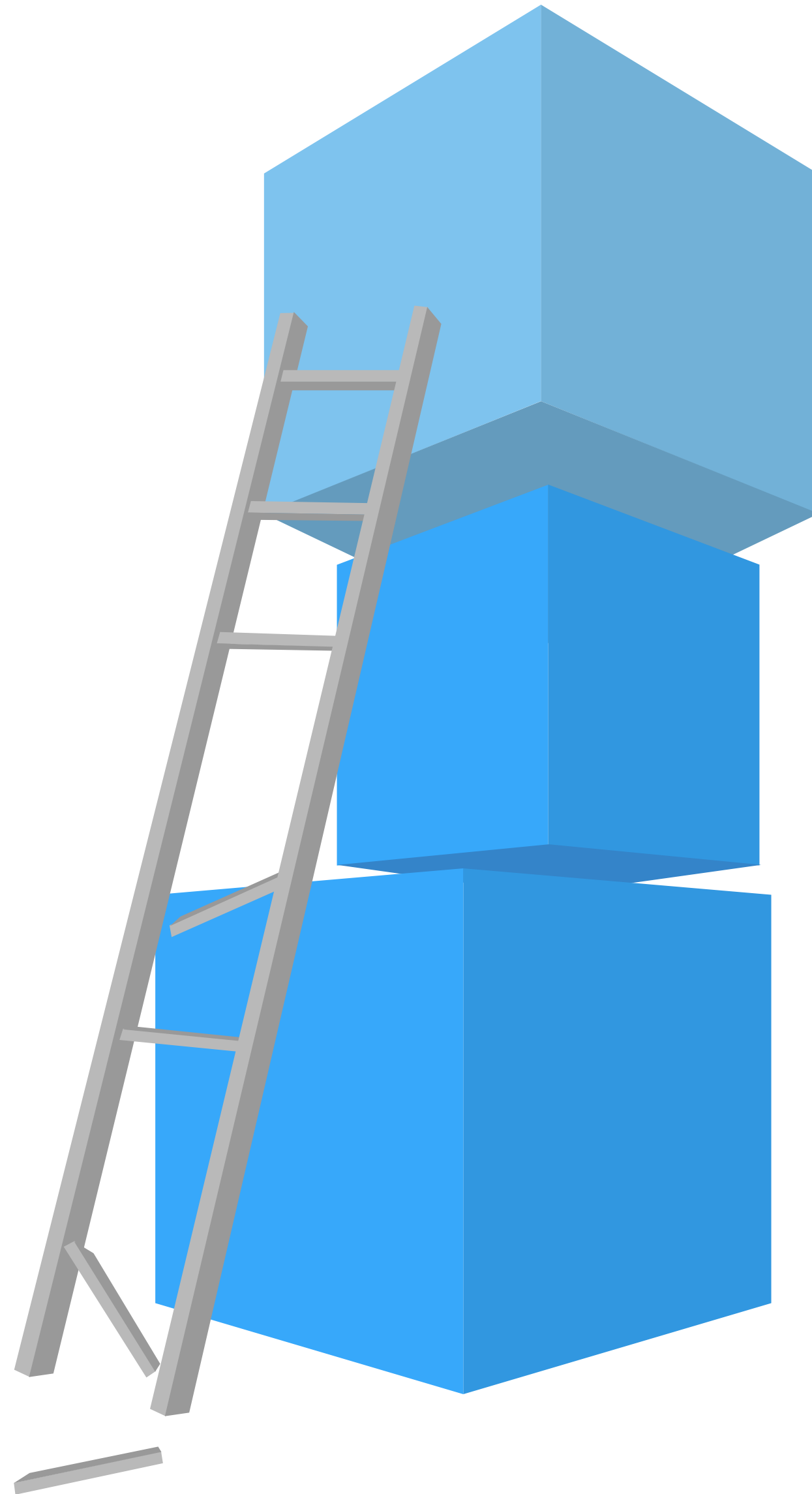
Evangelos Karagiannis  
ISA



## Our Purpose

The Bournemouth University (BU) strategic aims, vision and values will be supported by the information security team, which has responsibility for promoting good practice in information security throughout the organisation. This will help mitigate risks to BU's:

- Reputation
- Regulatory Compliance
- Resilience
- Revenue

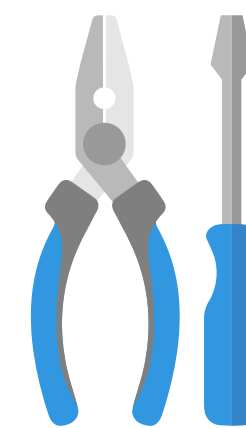


## Information security policies



Approved

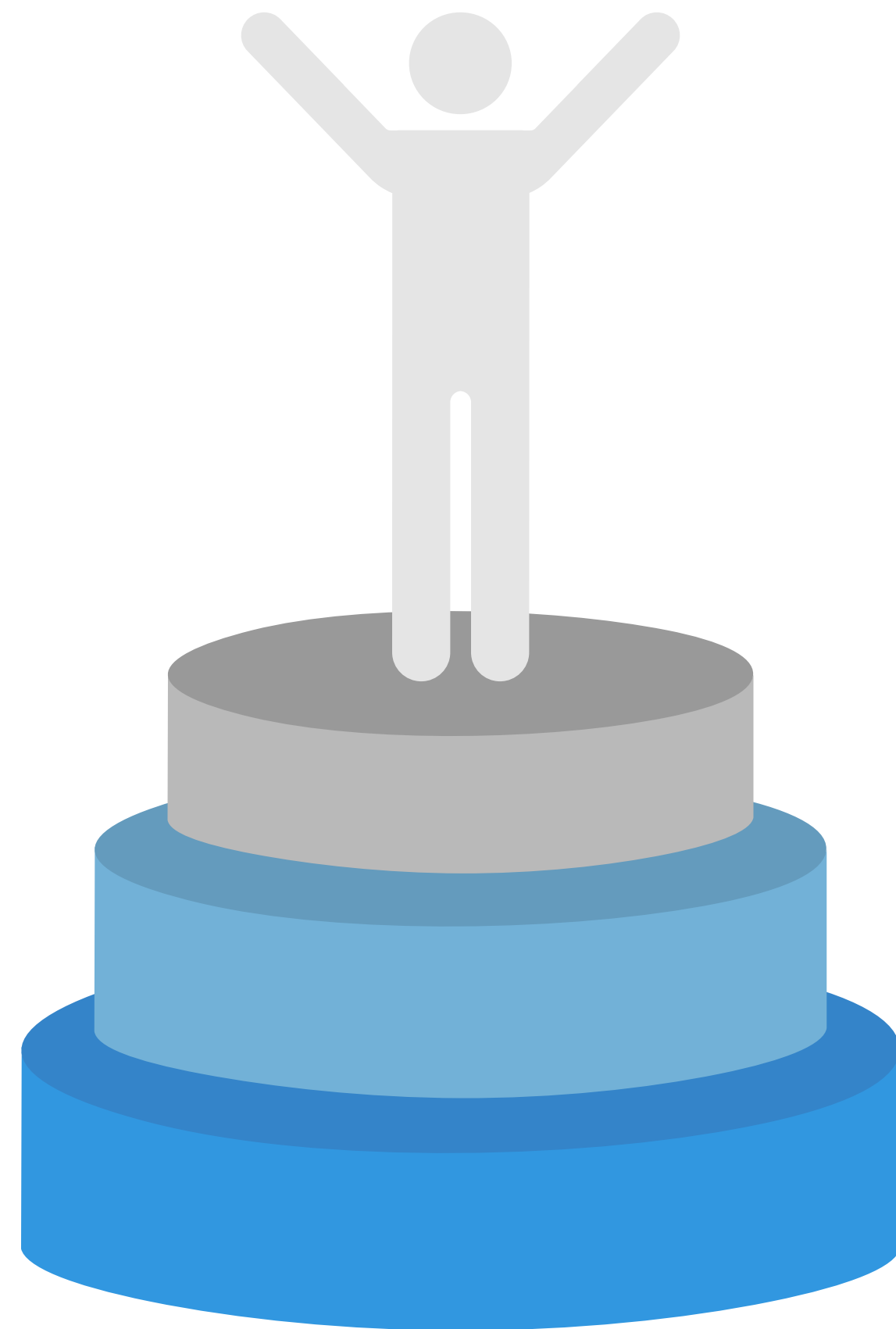
- [Information Security Policy](#)
- [Access Management Policy](#)
- [Acceptable Use Policy](#)
- [BU Staff and Authorised Users Policy](#)
- [Mobile Computing Policy](#)
- [Threat and Vulnerability Management Policy](#)



In progress

- Network Management Policy
- Technical Security Infrastructure
- Systems Management
- Third Party Access Policy
- Business Applications Policy
- Information Classification Policy
- Information Security Business Continuity Policy
- System Development Lifecycle Policy
- System Development Methodology
- Electronic Communication Policy
- Desktop Applications Policy
- Operations Security Policy
- Security Incident Management Policy

# Centre of excellence



1

## Be in the front line of

- providing advice on all aspects of information security.
- running an ongoing, continuous programme of information security awareness and changing security behaviours of staff throughout the organisation.

2

## Be the driving force in

- incorporating information security requirements into documented agreements and developing standard terms and conditions.
- providing support for protecting the information associated with the organisation's critical infrastructure.

3

## Lead the way in

- evaluating the security implications of specialised business initiatives.
- taking part in intelligence sharing activities and collaborating with cyber-partners.

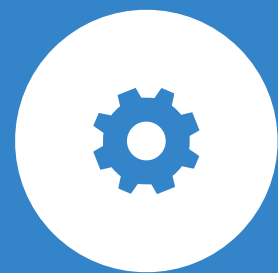
# Proactive Support



Information and Systems Classifications



Business & IT Projects



Risks Assessments



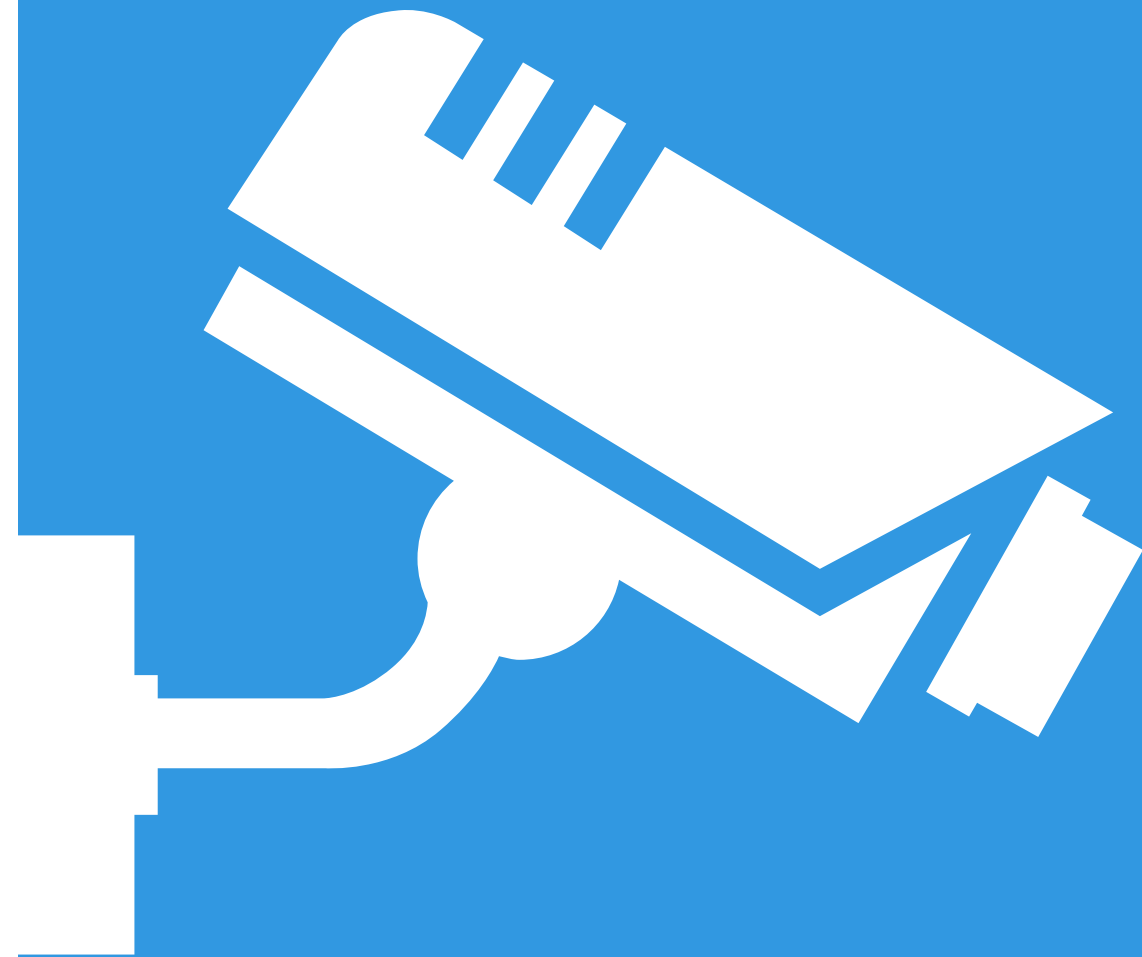
Cryptography



Security Audits



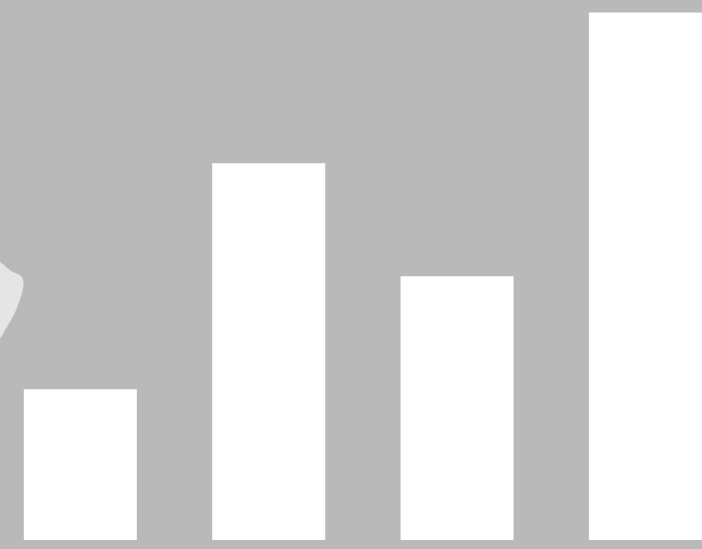
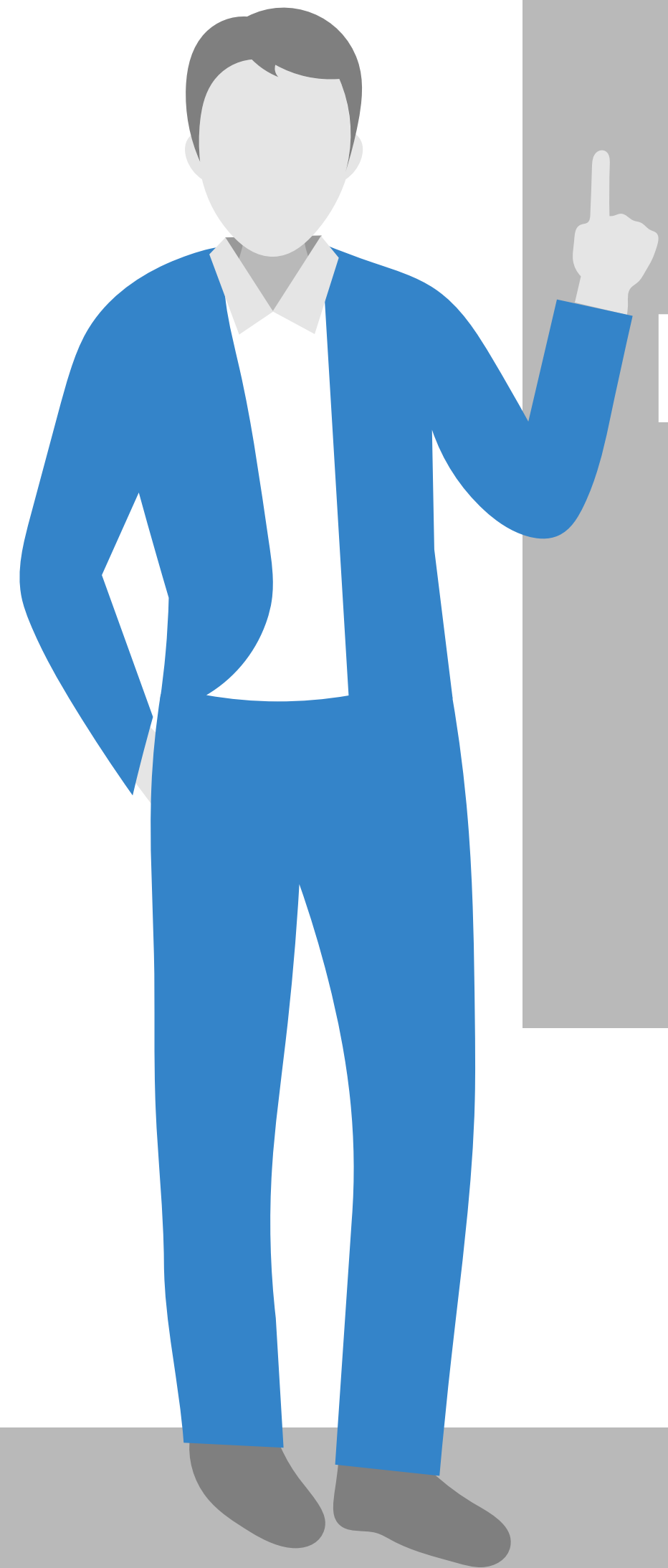
Business Continuity Program



# Monitor current, new and emerging trends

The information security function should monitor current, new and emerging:

- general business trends (e.g. prospects for growth, internationalisation, merger/acquisitions, joint ventures, divestitures, Bring Your Own Device (BYOD), outsourcing and cloud computing)
- technological developments (e.g. web-based technology, virtualisation, encryption standards, and IPv6)
- information security solutions (e.g. federated identity and access management (FIAM), Mobile Device Management (MDM) and intrusion prevention)
- industry/international information security-related standards (e.g. ISO/IEC 27001 and 27002, ISF SOGP, 20 Critical Security Controls, COBIT, NIST SP800-53 and ITIL)
- legislation or regulations related to information security (e.g. those concerning data breach notification, data privacy, digital signatures and industry-specific standards such as the Payment Card Industry Data Security Standard (PCI DSS)).



# Promote information security awareness

Using infographic materials, the team actively communicates the latest threats and evolving online frauds to reduce a potential attack to students, staff and the whole organisation.

# Intelligence analysis

