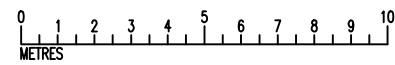
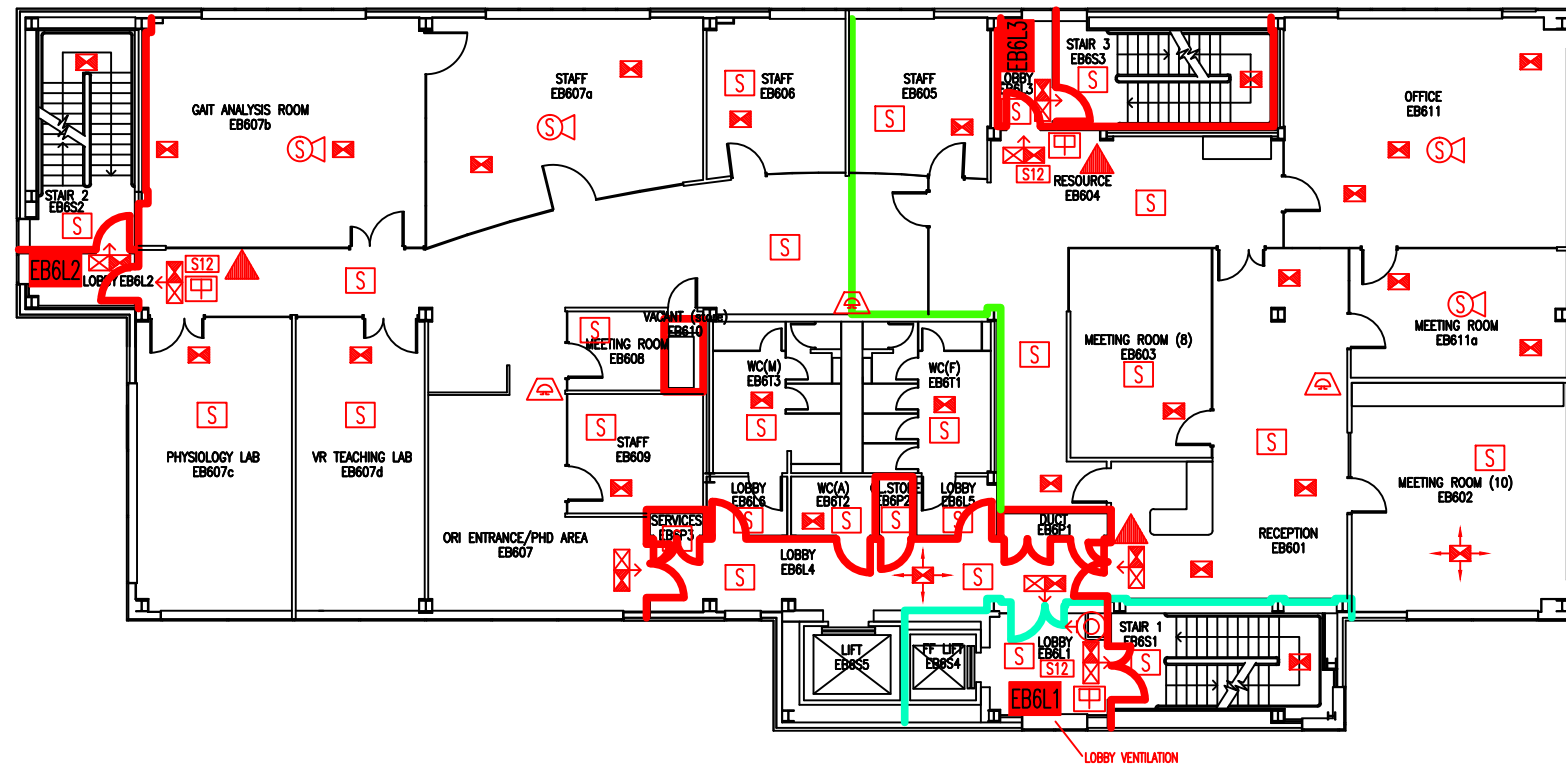


DATE	REVISION
A 27.7.11	PLAN UPDATED FOLLOWING WORKS TO FORM ADDITIONAL ROOMS
B 16.6.15	ALARM SOUNDER TO EB604 NOT SHOWN PREVIOUSLY ADDED.
C 17.8.15	UPDATE FOLLOWING FORMATION OF ROOMS EB611/11a.
D 28.10.15	UPDATE FOLLOWING FORMATION OF ORTHOPEDIC FACILITY
E 12.1.16	EB608 CHANGED TO 'MEETING ROOM'
F 22.9.16	EXTINGUISHER POSITIONS & TYPES UPDATED
G 18.10.18	UPDATE FOLLOWING REFURBISHMENT TO PROVIDE HSS LABS
H 18.12.18	EB604 UPDATED TO 'RESOURCE'



- EB6L1 Existing wheelchair refuge zone
- Existing 30-minute fire resisting construction
- Existing 2-hour fire resisting partition
- Existing 30-minute fire resisting cavity barrier in ceiling & floor void
- Existing dry riser outlet
- Existing exit sign - internally illuminated
- Denotes directional arrow on existing fire exit sign
- Existing 6 litre P50 foam fire extinguisher
- Existing call point - manual
- Existing smoke detector
- Existing combined smoke detector & sounder
- Existing audible warning device
- Existing fire action sign - general
- Existing emergency lighting luminaire
- Area covered by existing emergency lighting

THIS FIRE SAFETY PLAN IS GENERALLY BASED ON INFORMATION PROVIDED BY BU'S FIRE SAFETY OFFICER. IT IS THE RESPONSIBILITY OF ALL USERS OF THIS PLAN TO CHECK THE INFORMATION PROVIDED TO CONFIRM THE EXACT POSITIONS OF THE FIRE SAFETY EQUIPMENT, CAVITY BARRIERS ETC.

SIXTH FLOOR FIRE EQUIPMENT PLAN

EXECUTIVE BUSINESS
CENTRE

EB/FP/7H

SCALE 1:200 at A3
NOVEMBER 2009

