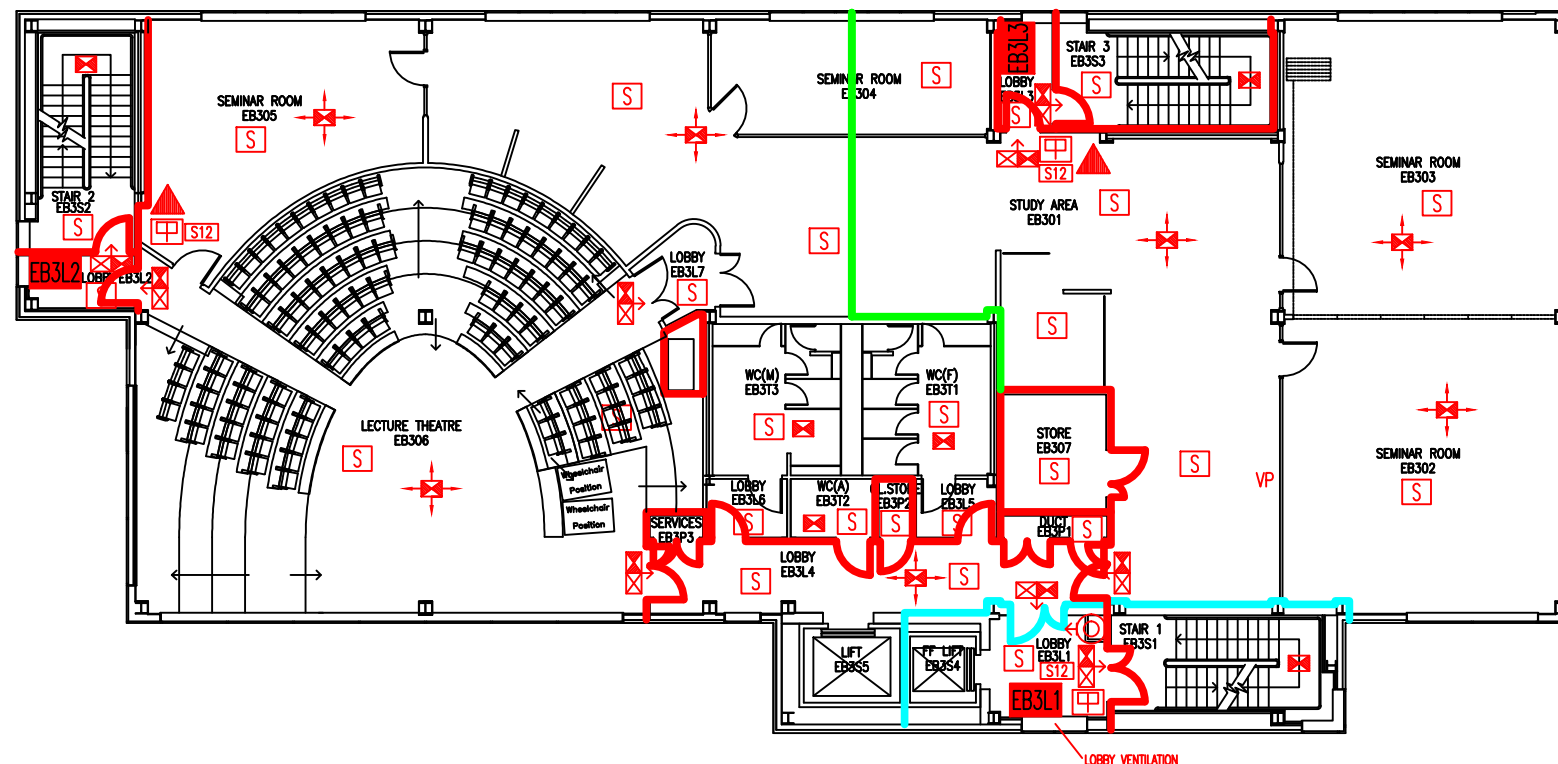


DATE	REVISION
A 1.11.10	EB304 FORMED INTO SEPERATE ROOM.
B 22.9.16	EXTINGUISHER POSITIONS & TYPES UPDATED
C 7.1.19	EB307 UPDATED TO 'VACANT'.
D 12.4.21	EB307 UPDATED TO 'STORE'.



- EB3L1** Existing wheelchair refuge zone
- Existing 30-minute fire resisting construction
- Existing 2-hour fire resisting partition
- Existing 30-minute fire resisting cavity barrier in ceiling & floor void
- Existing dry riser outlet
- Existing exit sign - internally illuminated
- Denotes directional arrow on existing fire exit sign
- Existing 6 litre P50 foam fire extinguisher
- Existing call point - manual
- Existing smoke detector
- Existing fire action sign - general
- Existing emergency lighting luminaire
- Area covered by existing emergency lighting
- Existing vision panel

THIS FIRE SAFETY PLAN IS GENERALLY BASED ON INFORMATION PROVIDED BY BU'S FIRE SAFETY OFFICER. IT IS THE RESPONSIBILITY OF ALL USERS OF THIS PLAN TO CHECK THE INFORMATION PROVIDED TO CONFIRM THE EXACT POSITIONS OF THE FIRE SAFETY EQUIPMENT, CAVITY BARRIERS ETC.

### THIRD FLOOR FIRE EQUIPMENT PLAN

### EXECUTIVE BUSINESS CENTRE

EB/FP/4D

SCALE 1:200 at A3  
NOVEMBER 2009

