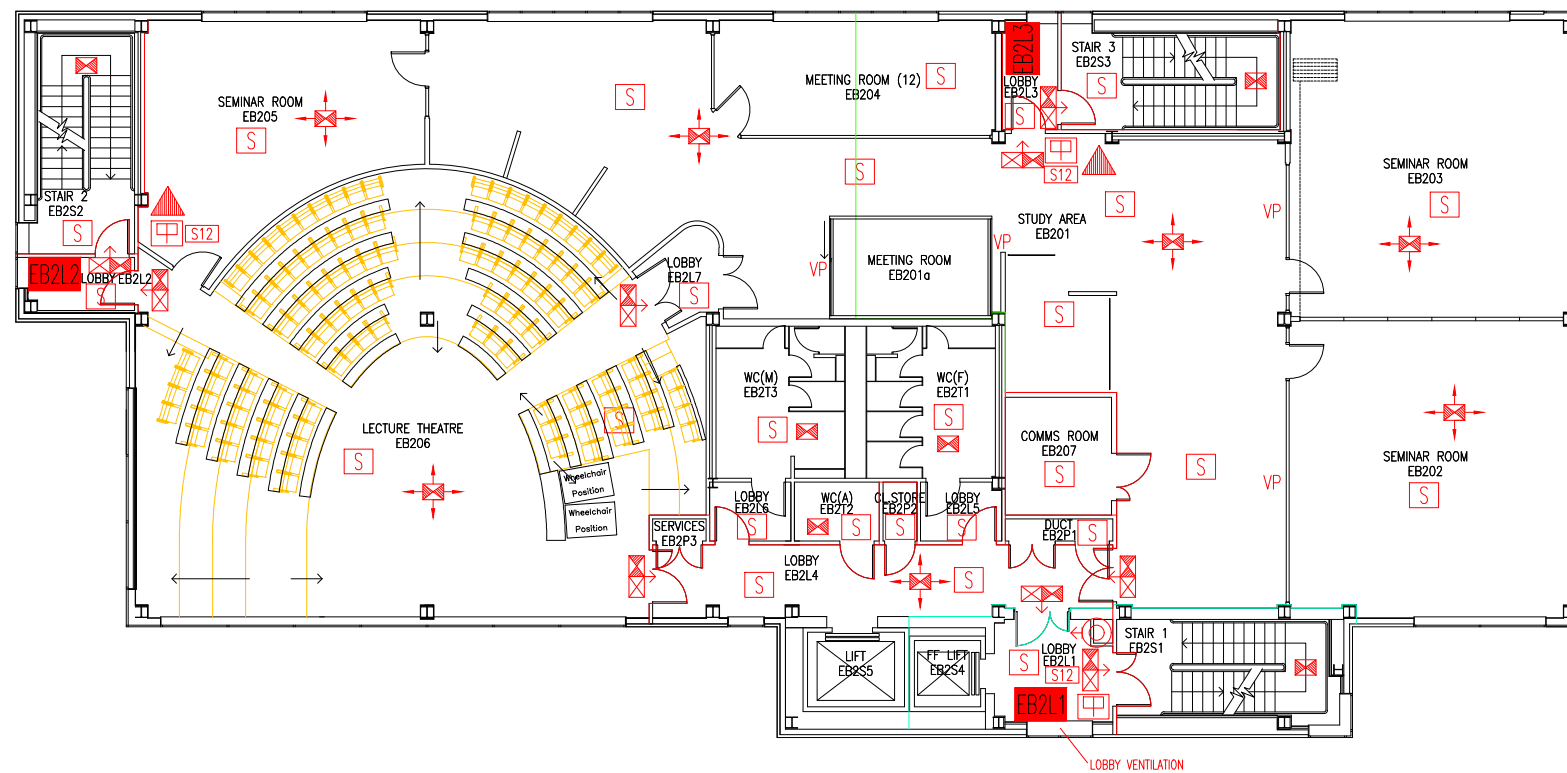


DATE	REVISION
A 16.4.14	EB204 UPDATED TO MEETING ROOM
B 22.9.16	EXTINGUISHER POSITIONS & TYPES UPDATED
C 18.12.19	EB201a CONSTRUCTED.
D 4.8.21	'TEA ROOM' NUMBERED EB201b.
E 21.8.25	EB201b REMOVED



THIS FIRE SAFETY PLAN IS GENERALLY BASED ON INFORMATION PROVIDED BY BU'S FIRE SAFETY OFFICER. IT IS THE RESPONSIBILITY OF ALL USERS OF THIS PLAN TO CHECK THE INFORMATION PROVIDED TO CONFIRM THE EXACT POSITIONS OF THE FIRE SAFETY EQUIPMENT, CAVITY BARRIERS ETC.

SECOND FLOOR  
FIRE EQUIPMENT  
PLAN

EXECUTIVE BUSINESS  
CENTRE

EB/FP/3E

SCALE 1:200 at A3  
NOVEMBER 2009

- EB2L1 Existing wheelchair refuge zone
- Existing 30-minute fire resisting construction
- Existing 2-hour fire resisting partition
- Existing 30-minute fire resisting cavity barrier in ceiling & floor void
- D Existing dry riser outlet
- E Existing exit sign - internally illuminated
- ← Denotes directional arrow on existing fire exit sign
- A Existing 6 litre P50 foam fire extinguisher
- M Existing call point - manual
- S Existing smoke detector
- S12 Existing fire action sign - general
- E Existing emergency lighting luminaire
- E Area covered by existing emergency lighting
- VP Existing vision panel

