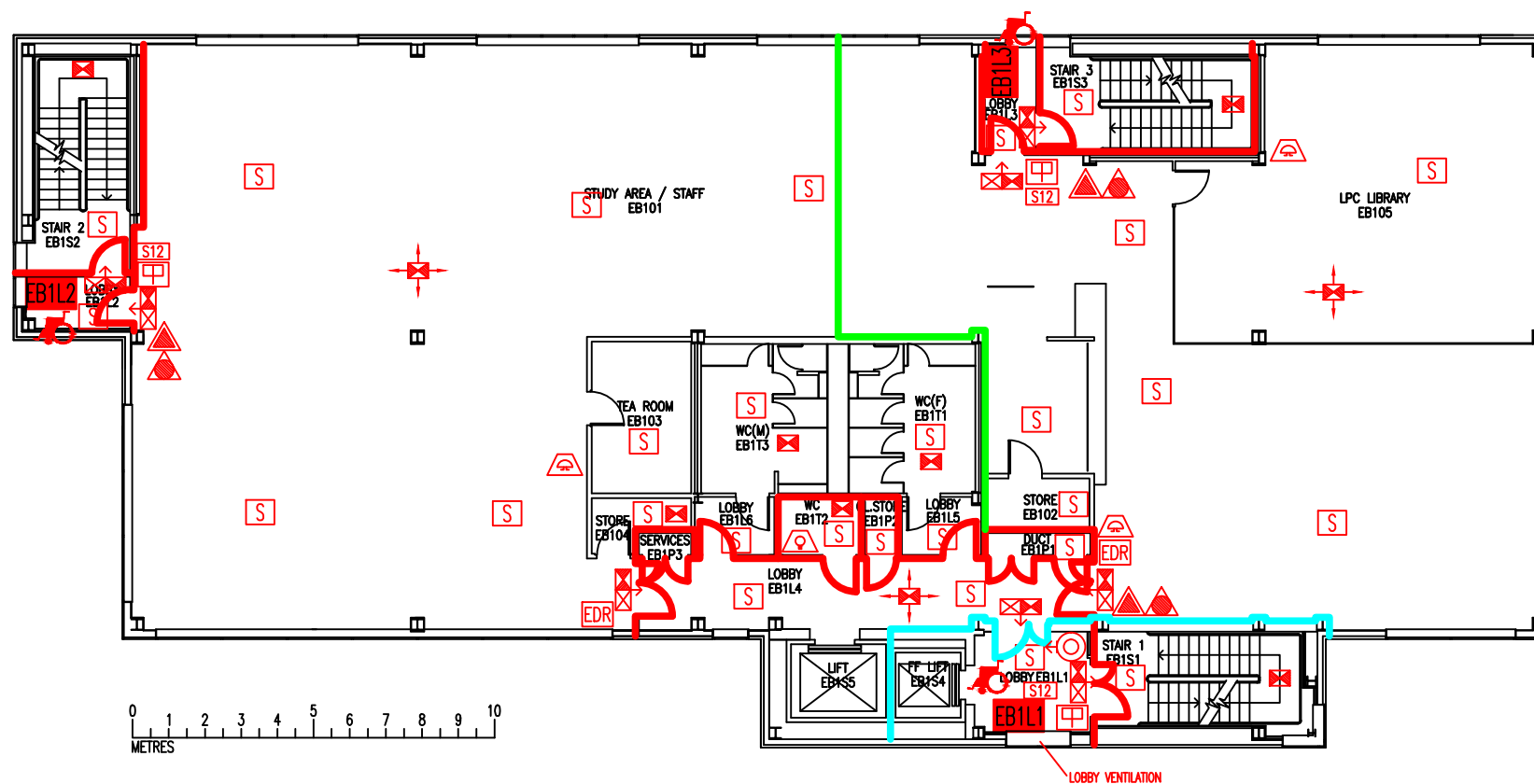
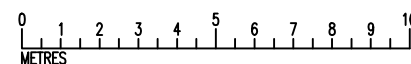


DATE	REVISION
A 19.8.10	UPDATE FOLLOWING FORMATION OF EB105
B 11.4.14	EB103 CHANGED TO TEA ROOM



- EB1L1** Existing wheelchair refuge zone
- Existing Evac chair
- Existing 30-minute fire resisting construction
- Existing 2-hour fire resisting partition
- Existing 30-minute fire resisting cavity barrier in ceiling & floor
- Existing dry riser outlet
- Existing audible warning device – bell
- Existing visual warning device
- Existing CO2 fire extinguisher
- Existing foam fire extinguisher
- Existing call point – manual
- Existing smoke detector
- Existing exit sign – internally illuminated
- Existing emergency lighting luminaire – self contained
- Existing emergency door release call point – manual
- Existing fire action sign – general
- Denotes directional arrow on existing fire exit sign
- Area covered by existing emergency lighting



FIRST FLOOR
FIRE EQUIPMENT
PLAN

EXECUTIVE BUSINESS
CENTRE

EB/FP/2B

SCALE 1:200 at A3
NOVEMBER 2009

