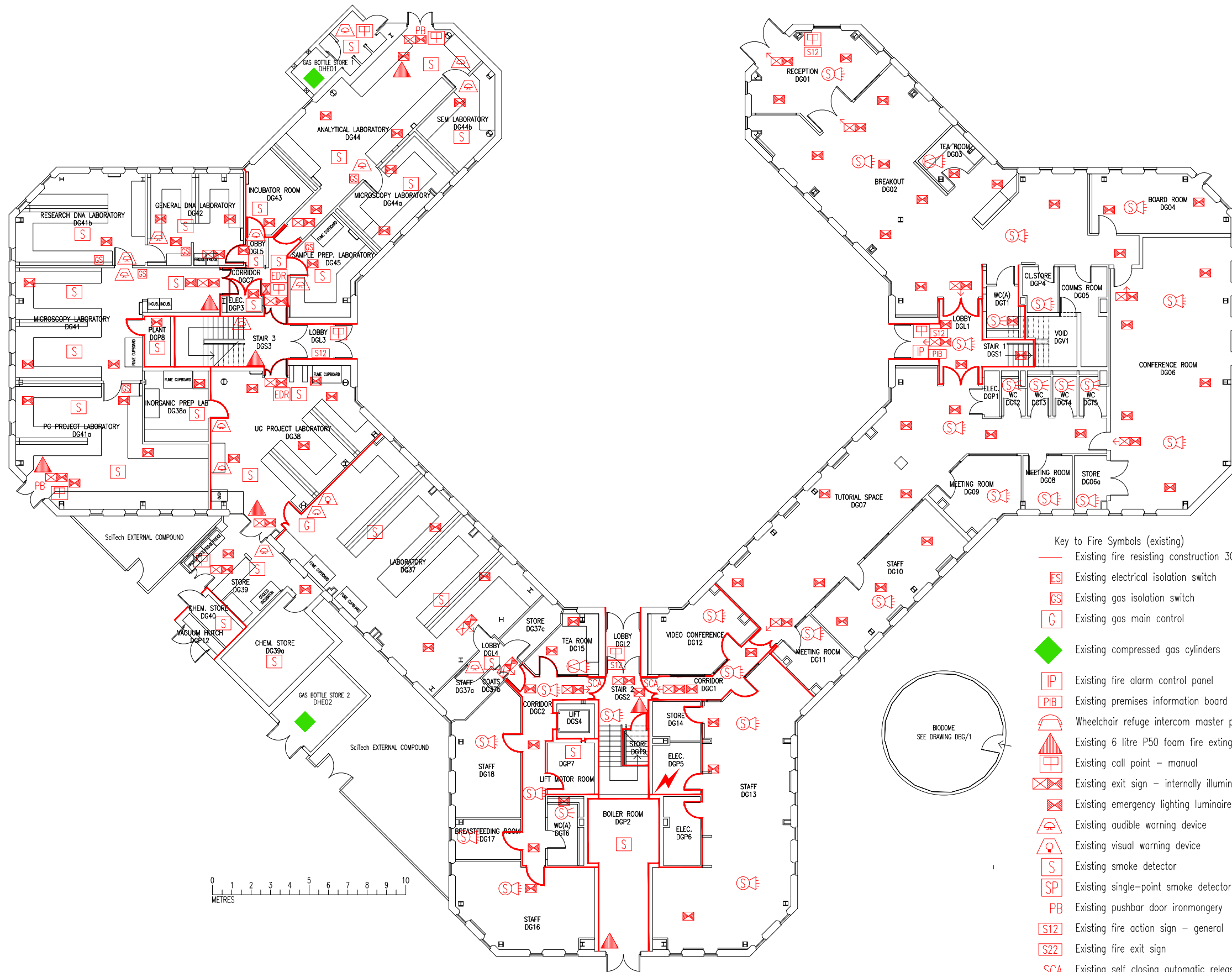


DATE	REVISION
AD 23.11.22	DG02, DG02a & DG02b ROOM NAMES UPDATED. DG17 & DG18 COMBINED TO SINGLE ROOM.
AE 12.10.23	UPDATE FOLLOWING REFURBISHMENT TO BUBS AREA.
AF 19.3.24	DG17 UPDATED TO 'BREASTFEEDING ROOM'.



- Key to Fire Symbols (existing)
- Existing fire resisting construction 30 min.
 - ES Existing electrical isolation switch
 - GS Existing gas isolation switch
 - G Existing gas main control
 - ◆ Existing compressed gas cylinders
 - IP Existing fire alarm control panel
 - PB Existing premises information board
 - Wheelchair refuge intercom master panel
 - Existing 6 litre P50 foam fire extinguisher
 - Existing call point – manual
 - Existing exit sign – internally illuminated
 - Existing emergency lighting luminaire
 - Existing audible warning device
 - Existing visual warning device
 - S Existing smoke detector
 - SP Existing single-point smoke detector
 - PB Existing pushbar door ironmongery
 - S12 Existing fire action sign – general
 - S22 Existing fire exit sign
 - SCA Existing self closing automatic release
 - EDR Existing emergency door release call point – manual
 - ← Denotes directional arrow on existing fire exit sign
 - FM Flammable materials risk area
 - ⚡ Electrical shut-off point for building

THIS FIRE SAFETY PLAN IS GENERALLY BASED ON INFORMATION PROVIDED BY BU'S FIRE SAFETY OFFICER. IT IS THE RESPONSIBILITY OF ALL USERS OF THIS PLAN TO CHECK THE INFORMATION PROVIDED TO CONFIRM THE EXACT POSITIONS OF THE FIRE SAFETY EQUIPMENT, CAVITY BARRIERS ETC.

GROUND FLOOR
FIRE PLAN

DORSET HOUSE

DH/FP/1AF

SCALE 1:200 at A3
AUGUST 2005

