

DATE	REVISION
A 20.1.06	PLAN UPDATED TO SHOW NEW ENTRANCE DOORS
B 21.9.06	PLAN UPDATED FOLLOWING RENUMBERING OF ROOMS
C 2.5.07	CG16 CONVERTED TO CS ROOMS CG16a & CG16b
D 4.9.07	CROSS-CORRIDOR DOORS & CAVITY BARRIERS UPDATED
E 30.4.08	CG12/12a COMBINED TO FORM LARGER COMMS.ROOM CG18 ALLOCATED TO CS FOR BONES STORE.
F 1.9.08	CG14/15 COMBINED TO FORM CS LAYOUT ROOM
G 12.5.09	WCs UPDATED FOLLOWING REFURBISHMENT
H SEPT.09	SEMINAR ROOMS CG04 & CG05 COMBINED, CG22 SUBDIVIDED TO FORM STORES FOR CS.
J 2.6.10	PLAN UPDATED FOLLOWING REFURB TO FOYER
K 9.9.11	CG21 & CG22a COMBINED, ALTERATIONS TO CG23.
L 16.11.11	CG24 & CG25 ROOM NUMBERS SWAPPED
M 23.8.12	PLAN UPDATED FOLLOWING FSO'S SURVEY
N 3.9.12	CG23 CHANGED FROM TEACHING ROOM TO OFFICE
P 20.1.15	CLSTORE ADDED
Q 5.3.15	CG02 CHANGED FROM TEACHING ROOM TO OFFICE
R 1.6.15	CG17 CAPACITY CHANGED TO 24
S 13.8.15	UPDATES TO SMOKE DETECTORS & CALL POINTS FOLLOWING FSO'S SURVEY
T 16.9.16	ROOMS CG01-CG08 CONVERTED TO CRIME SCENE FACILITY FOR SCITECH. ROOMS CG25-26 FORMED
U 19.9.16	EXTINGUISHER POSITIONS & TYPES UPDATED
V 21.12.16	UPDATE FOLLOWING ACCESS CONTROL WORKS TO CORRIDOR CGC1.
W 13.4.17	EXTINGUISHER ADDED IN CGP2
X 23.5.17	ELECTRICAL SHUT-OFF POINT ADDED
Z 18.7.18	UPDATE TO SUIT DOOR UPGRADE WORKS TO STAIRS 2 & 4.
AA 8.11.18	CG21 DOOR INFILLED.
AB 10.9.19	CG16a DOOR WIDTH UPDATED.
AC 29.7.20	CG17 UPDATED TO 'STAFF'. CG23 UPDATED TO 'VACANT'.
AD 6.11.20	CG23a-c ADDED FOLLOWING REFURBISHMENT WORKS. NEW LIFT ADDED.

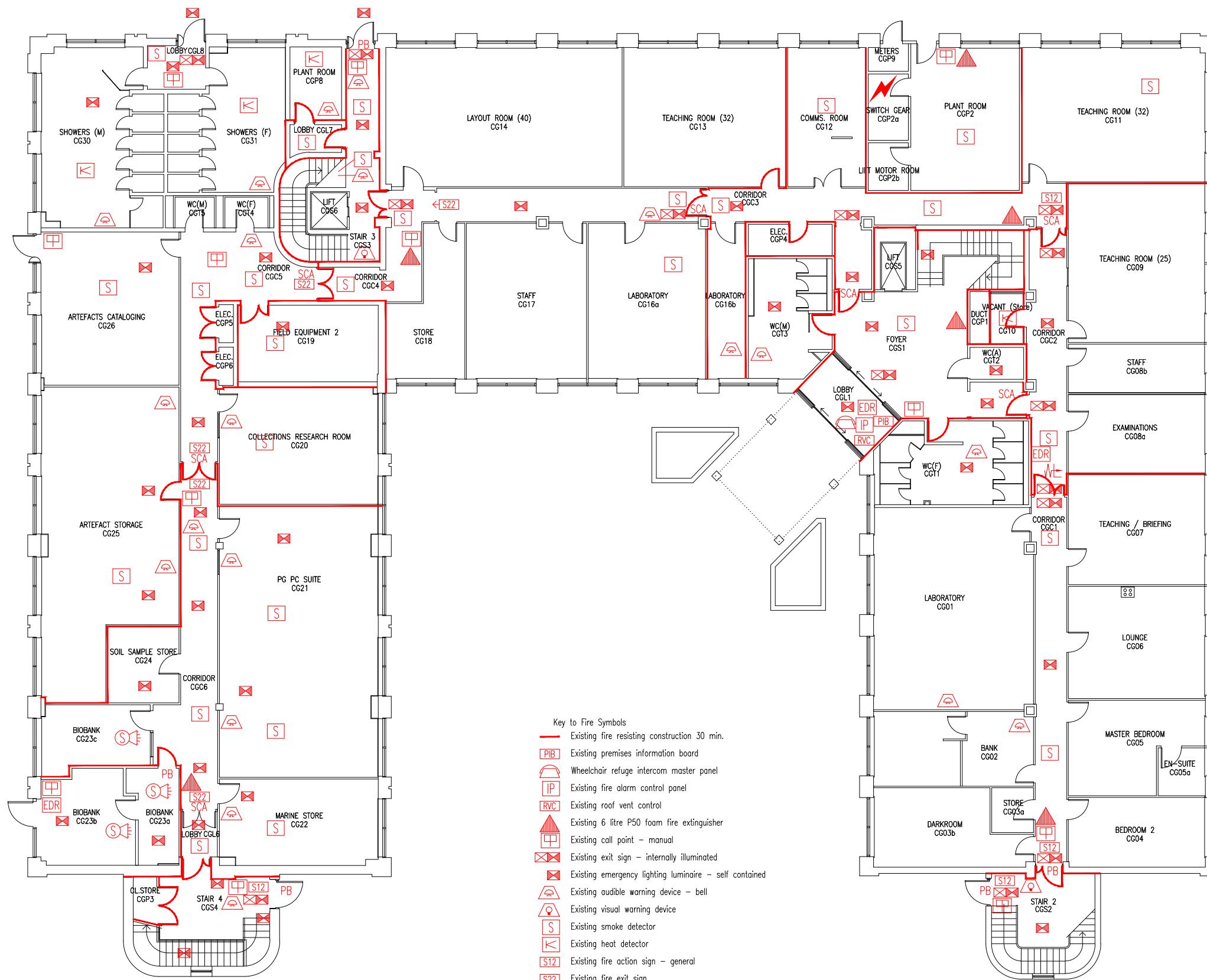
THIS FIRE SAFETY PLAN IS GENERALLY BASED ON INFORMATION PROVIDED BY BU'S FIRE SAFETY OFFICER. IT IS THE RESPONSIBILITY OF ALL USERS OF THIS PLAN TO CHECK THE INFORMATION PROVIDED TO CONFIRM THE EXACT POSITIONS OF THE FIRE SAFETY EQUIPMENT, CAVITY BARRIERS ETC.

GROUND FLOOR FIRE PLAN

CHRISTCHURCH HOUSE

CH/FP/1AD

SCALE 1:200 at A3
NOVEMBER 2005



- Key to Fire Symbols
- Existing fire resisting construction 30 min.
 - Existing premises information board
 - Wheelchair refuge intercom master panel
 - Existing fire alarm control panel
 - Existing roof vent control
 - Existing 6 litre P50 foam fire extinguisher
 - Existing call point - manual
 - Existing exit sign - internally illuminated
 - Existing emergency lighting luminaire - self contained
 - Existing audible warning device - bell
 - Existing visual warning device
 - Existing smoke detector
 - Existing heat detector
 - Existing fire action sign - general
 - Existing fire exit sign
 - Existing self closing automatic release
 - Existing pushbar door ironmongery
 - Denotes directional arrow on existing fire exit sign
 - Existing emergency door release call point - manual
 - Electro (solenoid) mechanical lock with fire alarm interface - lock set to fail unlocked on activation of fire alarm.
 - Electrical shut-off point for building