

DATE	REVISION
A 20.1.06	"CAVITY BARRIER REQUIRED" ADDED
B 7.6.06	PLAN UPDATED FOLLOWING WORKS TO C222-223b
C 29.1.07	PLAN UPDATED FOLLOWING RENUMBERING OF ROOMS & WORKS TO C221
D 4.9.07	CAVITY BARRIERS UPDATED
E 27.3.08	SIGNS & EMERGENCY LIGHTS AMENDED
F 17.8.09	C236 & C237 COMBINED TO FORM SINGLE OFFICE. C204 CONVERTED FROM PC LAB TO OFFICE.
G 2.6.10	PLAN UPDATED FOLLOWING REFURB TO LIFT LOBBY
H 24.8.10	C203-4 COMBINED TO FORM LARGER PC LAB
J 28.2.11	C218 & C219 CONVERTED INTO 3 OFFICES FOR ApSci.
K 17.6.11	C238 CONVERTED TO OFFICES FOR ApSci.
L 27.4.12	C217 CONVERTED TO OFFICES FOR ApSci.
M 23.8.12	PLAN UPDATED FOLLOWING FSO'S SURVEY
N 3.9.12	C216 CHANGED FROM TEACHING ROOM TO STAFF OFFICE
P 28.1.14	UPDATE FOLLOWING REFURBISHMENT TO C201 & WORKS TO FORM C204
R 21.11.14	UPDATE FOLLOWING REMOVAL OF INNER ROOM TO C237
S 22.6.15	UPDATE FOLLOWING CORRIDOR REFURB. TO ORIGINAL BUILDING
T 11.8.15	UPDATE FOLLOWING CHECK OF REFURBISHED CORRIDORS.
U 13.8.15	HEAT DETECTOR ADDED TO C222 FOLLOWING FSO'S SURVEY
V 19.9.16	EXTINGUISHER POSITIONS & TYPES UPDATED
W 24.1.18	C226 & C239 UPDATED TO "VACANT"
X 1.12.18	C202 & C205-211 UPDATED TO "VACANT"
Y 2.4.19	AREA OF REFURBISHMENT SHOWN. C02 & C205-211 UPDATED TO 'SciTech'.
Z 28.8.19	C222-C226 AREA UPDATED FOLLOWING FORMATION OF LABS.
AA 4.8.20	C203, C213-214, C216-221 & ADJACENT CORRIDORS / STAIRS CHANGED TO "VACANT".
AB 9.11.20	UPDATE FOLLOWING WORKS TO FORM LABORATORIES C215-C219. NEW LIFT ADDED.

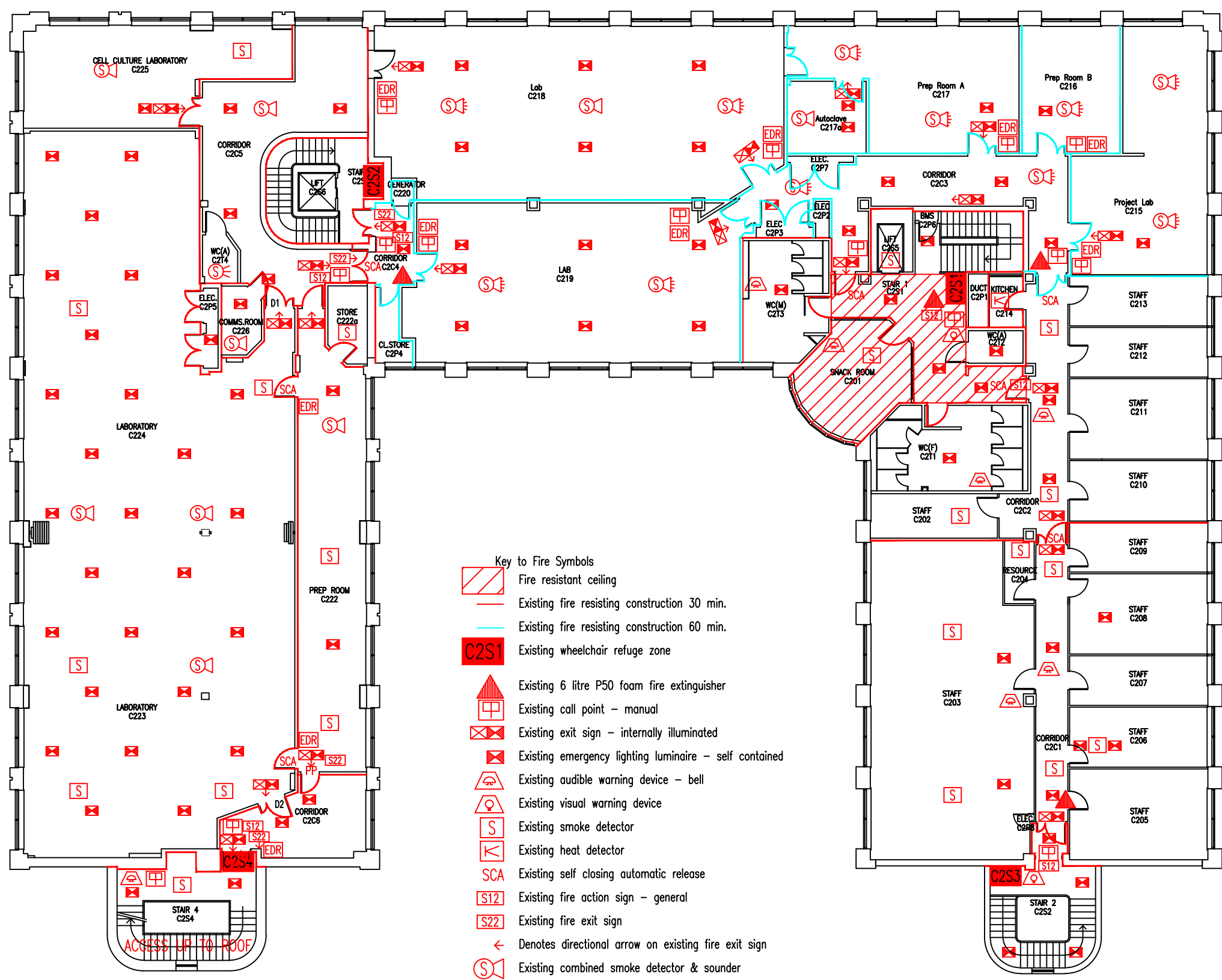
THIS FIRE SAFETY PLAN IS GENERALLY BASED ON INFORMATION PROVIDED BY BU'S FIRE SAFETY OFFICER. IT IS THE RESPONSIBILITY OF ALL USERS OF THIS PLAN TO CHECK THE INFORMATION PROVIDED TO CONFIRM THE EXACT POSITIONS OF THE FIRE SAFETY EQUIPMENT, CAVITY BARRIERS ETC.

SECOND FLOOR FIRE PLAN

CHRISTCHURCH HOUSE

CH/FP/3AB

SCALE 1:200 at A3
NOVEMBER 2005



- Key to Fire Symbols**
- Fire resistant ceiling
 - Existing fire resisting construction 30 min.
 - Existing fire resisting construction 60 min.
 - Existing wheelchair refuge zone
 - Existing 6 litre P50 foam fire extinguisher
 - Existing call point - manual
 - Existing exit sign - internally illuminated
 - Existing emergency lighting luminaire - self contained
 - Existing audible warning device - bell
 - Existing visual warning device
 - Existing smoke detector
 - Existing heat detector
 - Existing self closing automatic release
 - Existing fire action sign - general
 - Existing fire exit sign
 - Denotes directional arrow on existing fire exit sign
 - Existing combined smoke detector & sounder
 - Existing combined smoke detector & beacon
 - Existing combined smoke detector, sounder & beacon
 - Existing pushpad door ironmongery
 - Existing manual emergency door release call point

