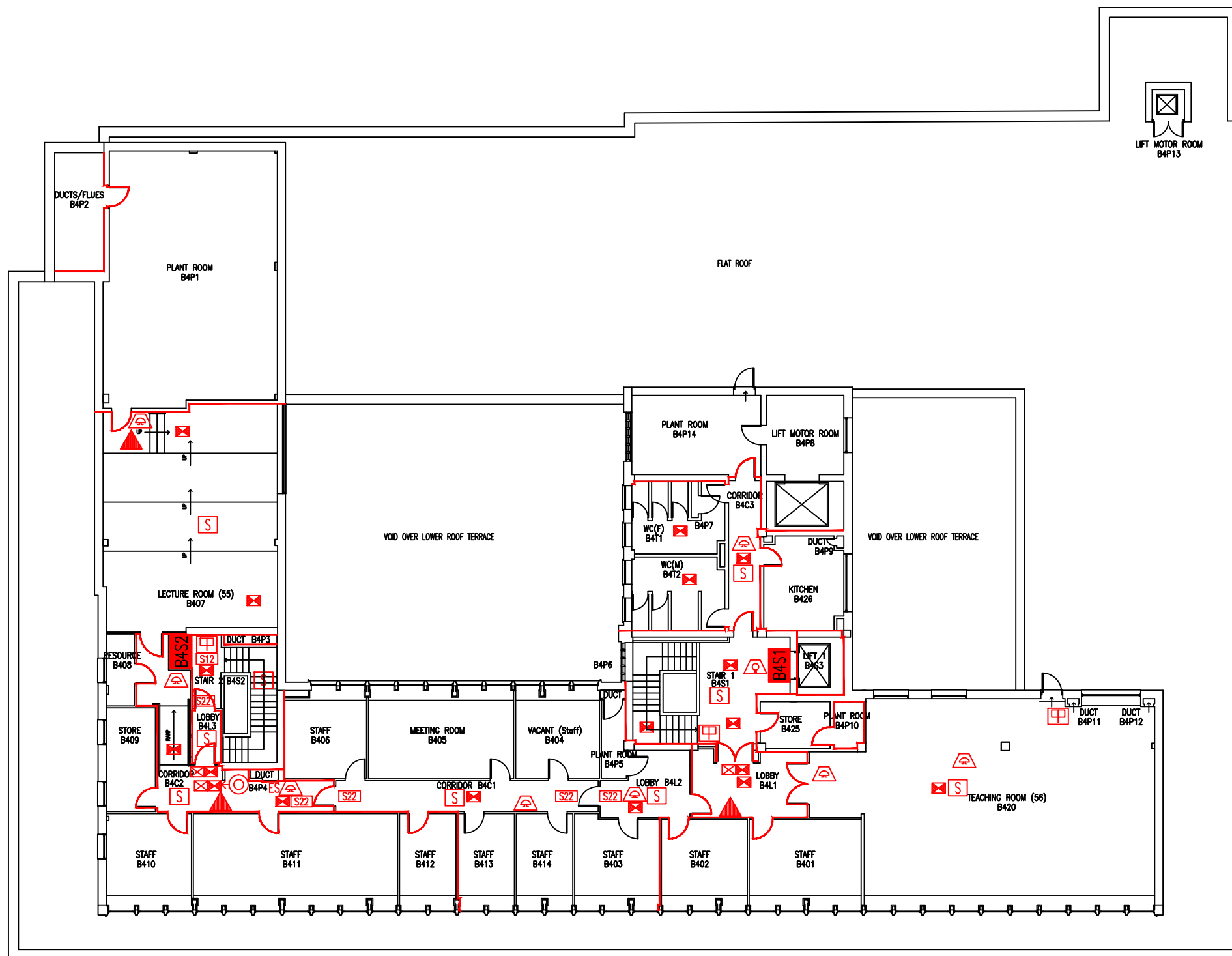


DATE	REVISION
A 1.10.09	PLAN UPDATED FOLLOWING FSO'S SURVEY
B 16.8.12	B420 & B423 CONVERTED TO TEACHING ROOM
C 22.10.12	UPDATED FOLLOWING FSO'S SURVEY
D 10.9.13	UPDATE FOLLOWING ALTERATIONS TO PARTITIONS, ROOM RENUMBERING & FIRE DOORS
E 2.9.16	B426 UPDATED TO 'KITCHEN'
F 19.9.16	EXTINGUISHER POSITIONS & TYPES UPDATED
G 11.12.18	B404 UPDATED TO 'VACANT'



- Key to Fire Symbols
- Existing fire resisting construction 30 min.
 - Existing wheelchair refuge zone
 - Existing dry riser outlet
 - Existing exit sign - internally illuminated
 - Existing emergency lighting luminaire - self contained
 - Existing 6 litre P50 foam fire extinguisher
 - Existing call point - manual
 - Existing audible warning device - bell
 - Existing visual warning device
 - Existing smoke detector
 - Existing fire action sign - general
 - Existing fire exit sign
 - Existing Enviro Seal

THIS FIRE SAFETY PLAN IS GENERALLY BASED ON INFORMATION PROVIDED BY BU'S FIRE SAFETY OFFICER. IT IS THE RESPONSIBILITY OF ALL USERS OF THIS PLAN TO CHECK THE INFORMATION PROVIDED TO CONFIRM THE EXACT POSITIONS OF THE FIRE SAFETY EQUIPMENT, CAVITY BARRIERS ETC.

FOURTH FLOOR FIRE PLAN

BOURNEMOUTH HOUSE

BH/FP/6G

SCALE 1:200 at A3
JANUARY 2009

