

DATE	REVISION
A 8.3.10	B137, B138f & B138g REMOVED. B136 ENLARGED. CAVITY BARRIER AROUND B136 ALTERED.
B 17.8.10	ROOMS B108 & B109 COMBINED.
C 13.1.11	PLAN UPDATED FOLLOWING FORMATION OF 'WELL BEING/ INNOVATION SPACE'
D 18.5.11	PLAN UPDATED FOLLOWING INSTALLATION OF TECHNOBOOTH
E 6.10.11	PLAN UPDATED FOLLOWING ALTERATIONS TO LIBRARY ROOMS
F 15.5.12	PLAN UPDATED FOLLOWING ALTERATIONS TO B105-110
G 22.8.12	DOORS & SCREEN TO B138 REPLACED
H 22.10.12	UPDATED FOLLOWING FSO'S SURVEY
J 16.1.13	ILLUMINATED EXIT SIGN ADDED IN B138
K 21.2.13	CAVITY BARRIER DETAILS UPDATED AS REQUESTED BY FSO
L 23.9.14	UPDATE FOLLOWING SUB-DIVISION OF B112a TO FORM B111.
M 23.12.15	B127 CONVERTED TO SILENT STUDY ROOM & RENUMBERED TO B138e.
N 9.10.17	B133 UPDATED TO 'VACANT (Store)'
P 20.2.18	B107 UPDATED TO 'STAFF'
Q 10.2.18	B105 UPDATED TO 'VACANT' & B107 UPDATED TO 'STORE'
R 19.2.20	B105 UPDATED TO 'MEETING ROOM'

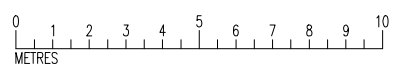
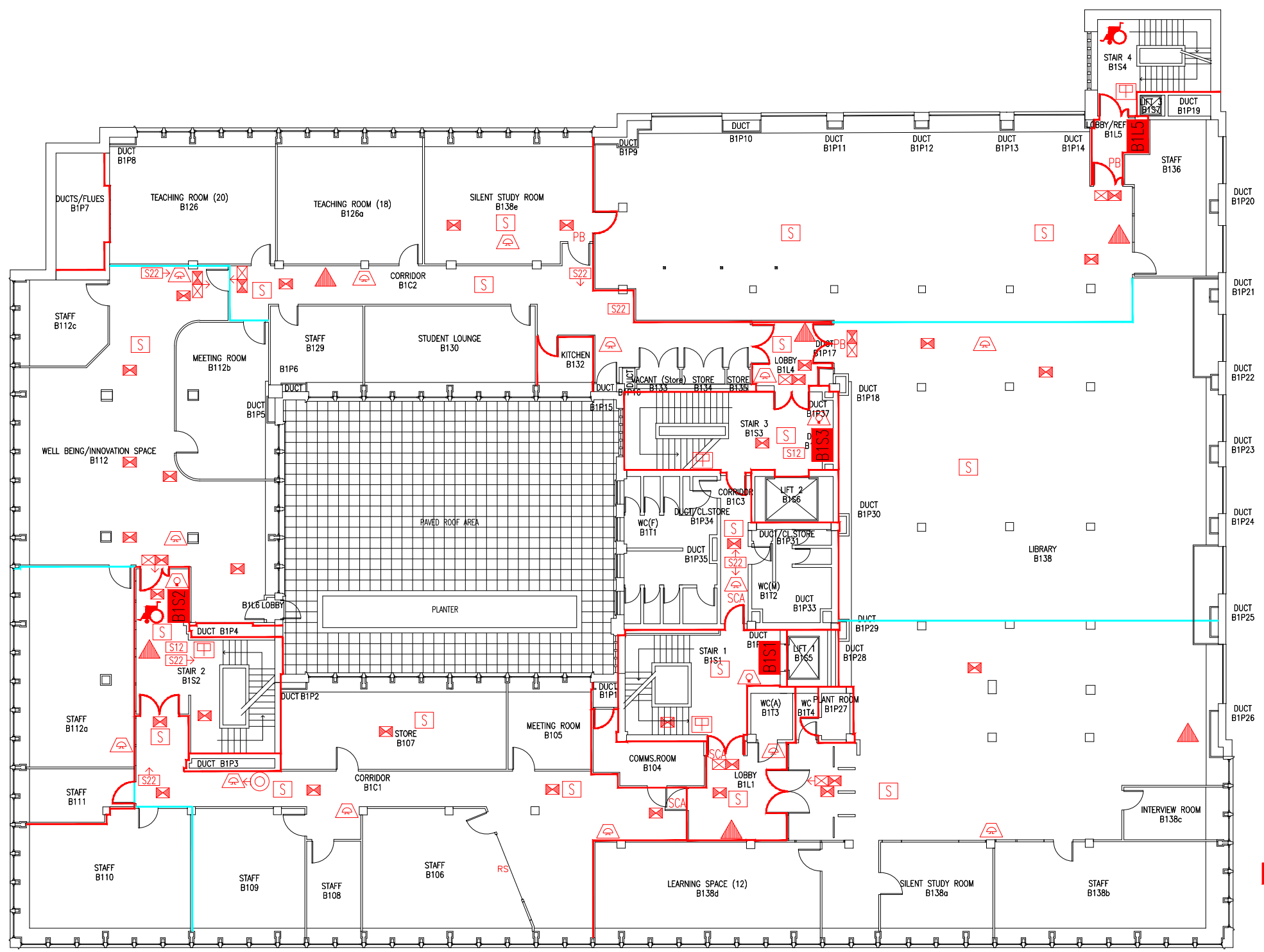
THIS FIRE SAFETY PLAN IS GENERALLY BASED ON INFORMATION PROVIDED BY BU'S FIRE SAFETY OFFICER. IT IS THE RESPONSIBILITY OF ALL USERS OF THIS PLAN TO CHECK THE INFORMATION PROVIDED TO CONFIRM THE EXACT POSITIONS OF THE FIRE SAFETY EQUIPMENT, CAVITY BARRIERS ETC.

FIRST FLOOR
FIRE PLAN

BOURNEMOUTH
HOUSE

BH/FP/3Q

SCALE 1:200 at A3
JANUARY 2009



- Key to Fire Symbols
- Existing fire resisting construction 30 min.
 - Existing cavity barrier
 - B1S1 Existing wheelchair refuge zone
 - Existing Evac chair
 - Existing dry riser outlet
 - Existing 6 litre P50 foam fire extinguisher
 - Existing call point - manual
 - Existing exit sign - internally illuminated
 - Existing emergency lighting luminaire - self contained
 - Existing audible warning device - bell
 - Existing visual warning device
 - Existing smoke detector
 - Existing pushbar door ironmongery
 - S12 Existing fire action sign - general
 - S22 Existing fire exit sign
 - Denotes directional arrow on existing fire exit sign
 - SCA Existing self closing automatic release
 - RS Roller shutter