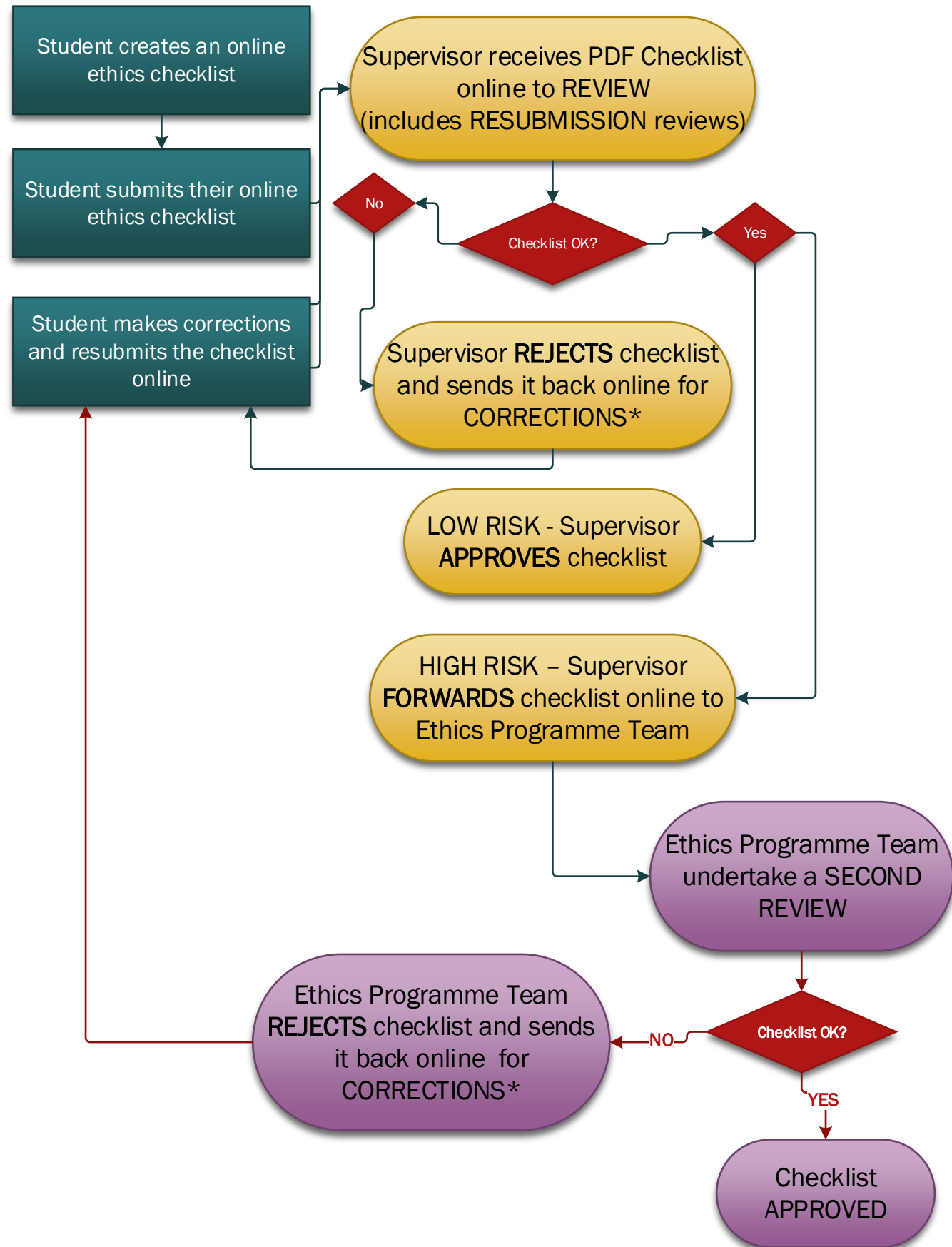


# Review and Approval Process Undergraduate and Postgraduate Taught Students



Student workflow process

Supervisor workflow process

Ethics Programme Team workflow process

\*If the Supervisor (low risk) or Ethics Programme Team (high risk) are **UNABLE** to grant ethics approval – advice should be sought from the Deputy Dean for Education & Professional Practice.

If ethics approval **CANNOT** be granted, students may **APPEAL** following appropriate Academic Assessment Regulations Procedure